



VISWAMBHARA EDUCATIONAL SOCIETY
VAAGDEVI COLLEGE OF PHARMACY

(Approved by AICTE & PCI, New Delhi & affiliated to Kakatiya University, Warangal, T.S)
Ramnagar Dist. Hanamakonda- 506001, (T.S)

STUDENTS FEEDBACK ON CURRICULUM

ACADEMIC YEAR 2023-2024

COURSE: B.Pharmacy

Total Number of Participants: 149

| S.No. | Parameters | Evaluation Parameters | | | | |
|-------|---|-----------------------|-----------|------|---------|------|
| | | Excellent | Very good | Good | Average | Poor |
| 1. | How do you rate the coverage of syllabus in time? | 63 | 56 | 29 | 0 | 1 |
| 2. | How do you rate the laboratory facilities in the college? | 38 | 90 | 20 | 0 | 1 |
| 3. | Modern teaching aids, Power point presentations, e-content etc are used by most of the teachers while teaching? | 55 | 54 | 39 | 1 | 0 |
| 4. | How do you rate the coverage of the curriculum in catering to your professional needs? | 50 | 71 | 25 | 3 | 0 |
| 5. | The prescribed books & online educational resources are available in the library? | 65 | 53 | 29 | 2 | 0 |
| 6. | How do you rate the value added courses offered to you in the curriculum? | 46 | 71 | 31 | 1 | 0 |
| 7. | How do you rate the evaluation scheme designed for each of the course? | 53 | 69 | 26 | 1 | 0 |

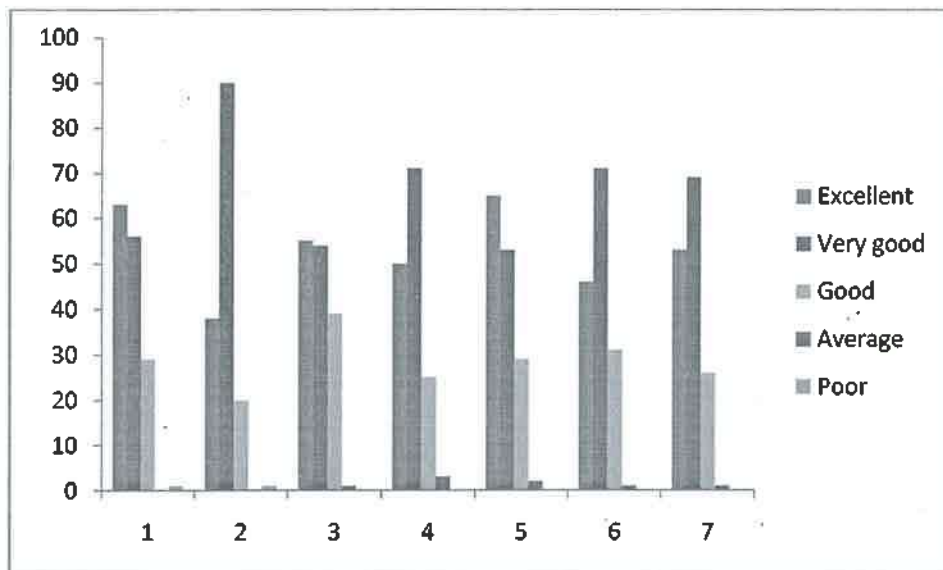



Principal
Vaagdevi College of Pharmacy
Hanamakonda, Warangal-506 001

STUDENTS FEEDBACK ON CURRICULUM

ACADEMIC YEAR 2023-2024

COURSE: B.Pharmacy



Principal
Vaagdevi College of Pharmacy
Hanamkonda, Warangal-506 001



VISWAMBHARA EDUCATIONAL SOCIETY

VAAGDEVI COLLEGE OF PHARMACY

(Approved by AICTE & PCI, New Delhi & affiliated to Kakatiya University, Warangal, T.S)
Ramnagar Dist. Hanumakonda- 506001, (T.S)

STUDENTS FEEDBACK ON CURRICULUM

ACADEMIC YEAR 2023-2024

COURSE: Pharm.D

Total Number of Participants: 60

| S.No. | Parameters | Evaluation Parameters | | | | |
|-------|---|-----------------------|-----------|------|---------|------|
| | | Excellent | Very good | Good | Average | Poor |
| 1. | How do you rate the coverage of syllabus in time? | 18 | 20 | 17 | 4 | 1 |
| 2. | How do you rate the laboratory facilities in the college? | 3 | 22 | 23 | 9 | 3 |
| 3. | Modern teaching aids, Power point presentations, e-content etc are used by most of the teachers while teaching? | 12 | 15 | 25 | 5 | 38 |
| 4. | How do you rate the coverage of the curriculum in catering to your professional needs? | 8 | 17 | 27 | 6 | 2 |
| 5. | The prescribed books & online educational resources are available in the library? | 11 | 28 | 20 | 1 | 0 |
| 6. | How do you rate the value added courses offered to you in the curriculum? | 12 | 13 | 25 | 9 | 1 |
| 7. | How do you rate the evaluation scheme designed for each of the course? | 18 | 12 | 16 | 9 | 5 |



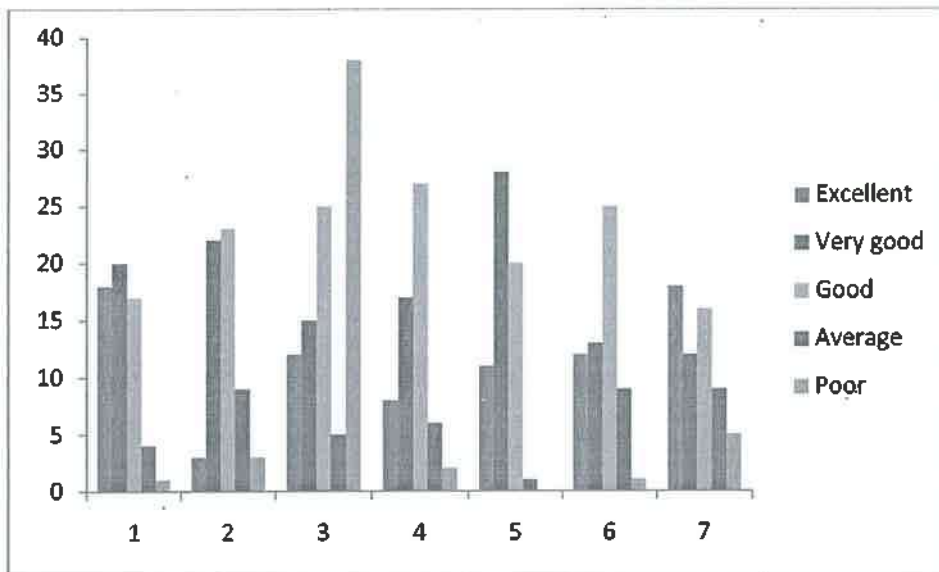
(Handwritten signature)

Principal
Vaagdevi College of Pharmacy
Hanumakonda, Warangal-506 001

STUDENTS FEEDBACK ON CURRICULUM

ACADEMIC YEAR 2023-2024

COURSE: Pharm.D




Principal
Vaagdevi College of Pharmacy
Hanamkonda, Warangal-506 001



STUDENTS FEEDBACK ON CURRICULUM

ACADEMIC YEAR 2023-2024

COURSE: M.Pharmacy

Total Number of Participants: 17

| S.No. | Parameters | Evaluation Parameters | | | | |
|-------|---|-----------------------|-----------|------|---------|------|
| | | Excellent | Very good | Good | Average | Poor |
| 1. | How do you rate the coverage of syllabus in time? | 8 | 7 | 2 | 0 | 0 |
| 2. | How do you rate the laboratory facilities in the college? | 5 | 9 | 2 | 1 | 0 |
| 3. | Modern teaching aids, Power point presentations, e-content etc are used by most of the teachers while teaching? | 7 | 5 | 3 | 2 | 0 |
| 4. | How do you rate the coverage of the curriculum in catering to your professional needs? | 4 | 9 | 4 | 0 | 0 |
| 5. | The prescribed books & online educational resources are available in the library? | 6 | 7 | 2 | 1 | 1 |
| 6. | How do you rate the value added courses offered to you in the curriculum? | 8 | 4 | 2 | 2 | 1 |
| 7. | How do you rate the evaluation scheme designed for each of the course? | 4 | 8 | 5 | 0 | 0 |

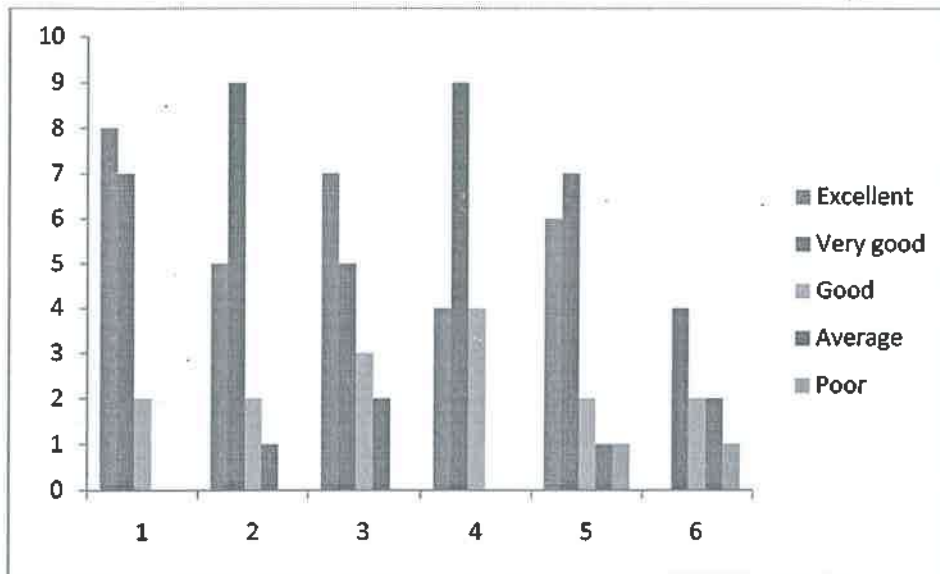



 Principal
 Vaagdevi College of Pharmacy

STUDENTS FEEDBACK ON CURRICULUM

ACADEMIC YEAR 2023-2024

COURSE: M.Pharmacy



Report

Comment by Principal

ICT enabled classrooms were increased to continuation of classes for the better delivery of the course curriculum.




Principal
Vaagdevi College of Pharmacy
Hanamkonda, Warangal-506 001



VISWAMBHARA EDUCATIONAL SOCIETY

VAAGDEVI COLLEGE OF PHARMACY

(Approved by AICTE & PCI, New Delhi & affiliated to Kakatiya University, Warangal, T.S)
Ramnagar Dist. Hanamakonda- 506001, (T.S)

FACULTY FEEDBACK ON CURRICULUM

ACADEMIC YEAR 2023-2024

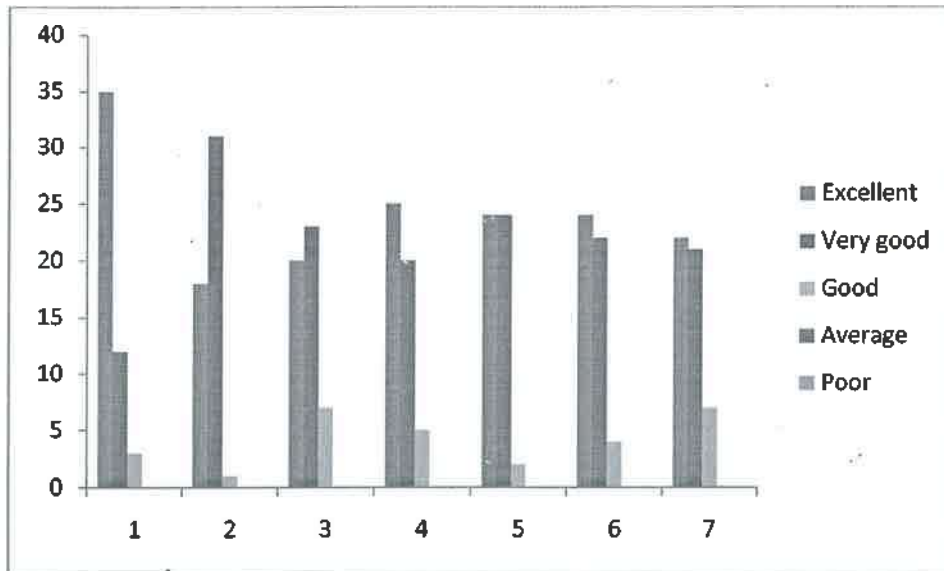
Total Number of Participants: 50

| S.No. | Parameters | Evaluation Parameters | | | | |
|-------|--|-----------------------|-----------|------|---------|------|
| | | Excellent | Very good | Good | Average | Poor |
| 1. | How do you rate the coverage of the curriculum in catering to your professional needs? | 35 | 12 | 3 | 0 | 0 |
| 2. | How do you rate the relevance of the courses in the curriculum in helping students to attain the program outcomes? | 18 | 31 | 1 | 0 | 0 |
| 3. | How do you rate the relevance of the curriculum in relation to latest technology or emerging trends in the industry? | 20 | 23 | 7 | 0 | 0 |
| 4. | How do you rate the usefulness of training given to you for effective teaching? | 25 | 20 | 5 | 0 | 0 |
| 5. | How do you rate the relevance of courses in curriculum in making student employable? | 24 | 24 | 2 | 0 | 0 |
| 6. | How do you rate the facilities for delivering the course content effectively? | 24 | 22 | 4 | 0 | 0 |
| 7. | How do you rate the relevance of the add on / value added courses offered to the students in the curriculum? | 22 | 21 | 7 | 0 | 0 |



Principal

Vaagdevi College of Pharmacy
Hanamakonda, Warangal-506 001



Report

Comment by Principal

It is instructed to all faculties to enroll in online courses available in SWAYAM portal related to their area of expertise which adds up additional knowledge.




Principal
Vaagdevi College of Pharmacy
 Hanamkonda, Warangal-506 001



ALUMNI FEEDBACK ON CURRICULUM

ACADEMIC YEAR 2023-2024

Total Number of Participants: 12

| S.No. | Parameters | Evaluation Parameters | | | | |
|-------|--|-----------------------|-----------|------|---------|------|
| | | Excellent | Very good | Good | Average | Poor |
| 1. | How do you rate the relevance of courses in curriculum in attaining the required skills competencies to your job? | 11 | 1 | 0 | 0 | 0 |
| 2. | How do you rate the relevance of the courses in the curriculum and its contents? | 3 | 9 | 0 | 0 | 0 |
| 3. | How do you rate the relevance of the curriculum in relation to latest technology or emerging trends in the industry? | 9 | 1 | 2 | 0 | 0 |
| 4. | How do you rate the coverage of the curriculum in catering to your professional needs? | 8 | 3 | 1 | 0 | 0 |
| 5. | How do you rate the objectives stated and relevance to the course content? | 8 | 3 | 1 | 0 | 0 |
| 6. | How do you rate the add on/ value added courses offered to you in the curriculum in developing disposition in your career? | 5 | 6 | 1 | 0 | 0 |
| 7. | How do you rate the relevance of curriculum in career orientation? | 9 | 2 | 1 | 0 | 0 |



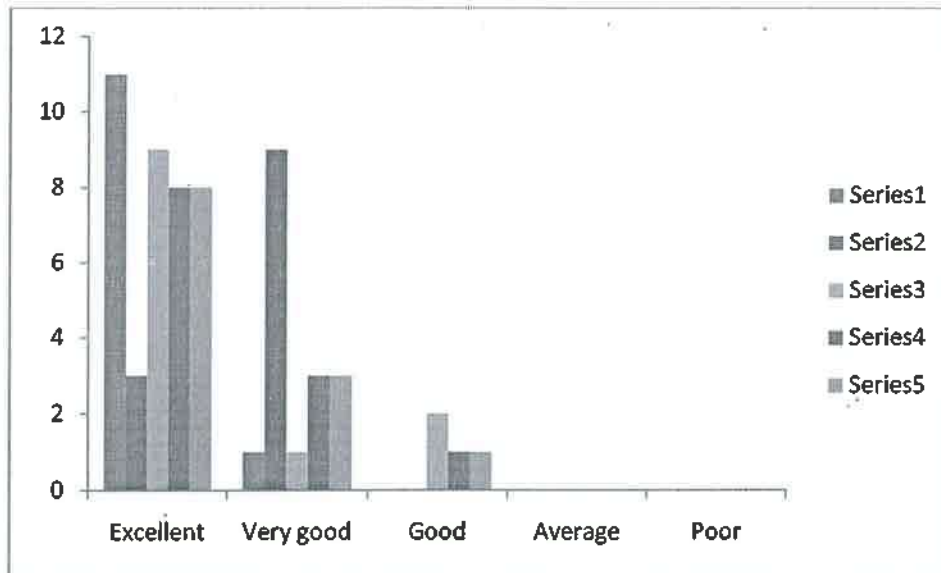
(Handwritten signature in blue ink)

Principal
Vaagdevi College of Pharmacy
 Hanumakonda, Warangal, T.S.

ALUMNI FEEDBACK ON CURRICULUM

ACADEMIC YEAR 2023-2024

Total Number of Participants: 12



Report

Comment by Principal

As part of regular curriculum practice, we are involving Alumni for the purpose of seminar conduction and various event activities.




Principal
Vaagdevi College of Pharmacy
Hanamkonda, Warangal-506 001



EMPLOYER FEEDBACK ON CURRICULUM

ACADEMIC YEAR 2023-2024

Total Number of Participants: 06

| S.No. | Parameters | Evaluation Parameters | | | | |
|-------|--|-----------------------|-----------|------|---------|------|
| | | Excellent | Very good | Good | Average | Poor |
| 1. | How would you rate the current curriculum in relevant in developing the industry expected outcomes from the candidate? | 5 | 1 | 0 | 0 | 0 |
| 2. | How do you rate the curriculum is relevant in developing a dedicated attitude in the candidate? | 3 | 3 | 0 | 0 | 0 |
| 3. | How do you rate the current curriculum is relevant in addressing the needs/problems of the client groups? | 2 | 3 | 1 | 0 | 0 |
| 4. | How would you rate the proficiency of our students working with you? | 2 | 4 | 0 | 0 | 0 |
| 5. | Skill sets | 3 | 3 | 0 | 0 | 0 |
| 6. | Competencies | 2 | 4 | 0 | 0 | 0 |
| 7. | Disposition | 4 | 2 | 0 | 0 | 0 |



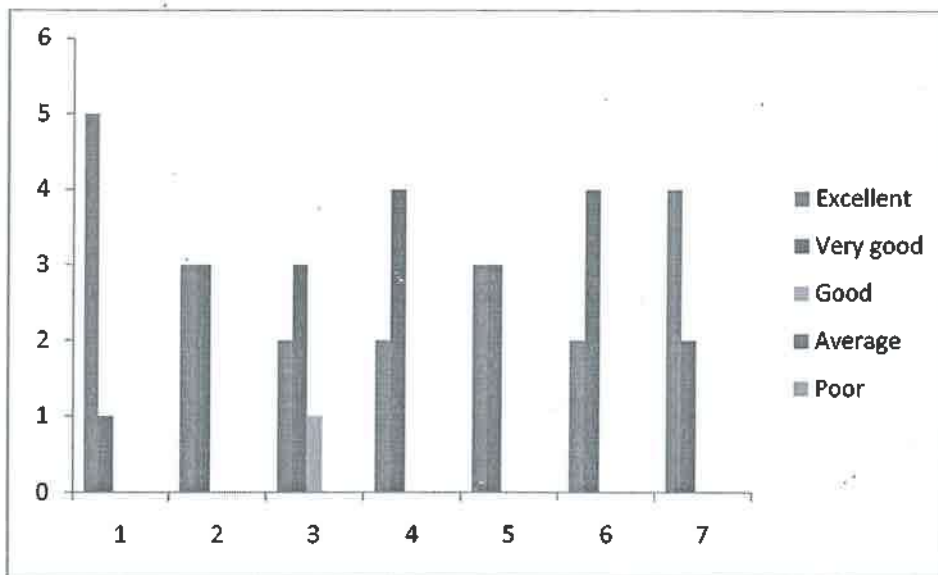
[Handwritten signature]

Principal
Vaagdevi College of Pharmacy
 Hanamkonda, Warangal-506 001

EMPLOYER FEEDBACK ON CURRICULUM

ACADEMIC YEAR 2023-2024

Total Number of Participants: 11



Report

Comment by Principal

Industry visits are arranged to enrich the education.



Principal
Vaagdevi College of Pharmacy
Hanamkonda, Warangal-506 001