



VISWAMBHARA EDUCATIONAL SOCIETY
VAAGDEVI COLLEGE OF PHARMACY

(Approved by AICTE & PCI, New Delhi & affiliated to Kakatiya University, Warangal, T.S)
Ramnagar Dist. Hanumakonda- 506001, (T.S)

STUDENTS FEEDBACK ON CURRICULUM

ACADEMIC YEAR 2021-2022

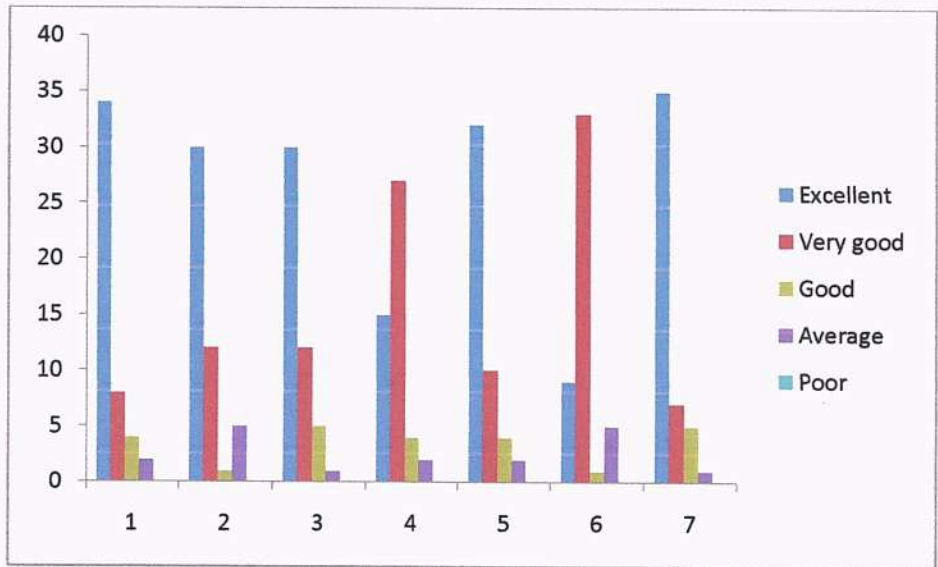
COURSE: B.Pharmacy

Total Number of Participants: 48

S.No.	Parameters	Evaluation Parameters				
		Excellent	Very good	Good	Average	Poor
1.	How do you rate the coverage of syllabus in time?	34	8	4	2	0
2.	How do you rate the objectives stated and relevance to the course content?	30	12	1	5	0
3.	How do you rate the laboratory experiments correlate with the theory?	30	12	5	1	0
4.	How do you rate the coverage of the curriculum in catering to your professional needs?	15	27	4	2	0
5.	How do you rate the relevance of the courses in the curriculum and its contents?	32	10	4	2	0
6.	How do you rate the add on / value added courses offered to you in the curriculum?	9	33	1	5	0
7.	How do you rate the evaluation scheme designed for each of the course?	35	7	5	1	0



Principal
Vaagdevi College of Pharmacy
Hanamkonda, Warangal-506 001



Principal
Vaagdevi College of Pharmacy
 Hanamkonda, Warangal-506 001



VISWAMBHARA EDUCATIONAL SOCIETY
VAAGDEVI COLLEGE OF PHARMACY

(Approved by AICTE & PCI, New Delhi & affiliated to Kakatiya University, Warangal, T.S)
Ramnagar Dist. Hanumakonda- 506001, (T.S)

STUDENTS FEEDBACK ON CURRICULUM

ACADEMIC YEAR 2021-2022

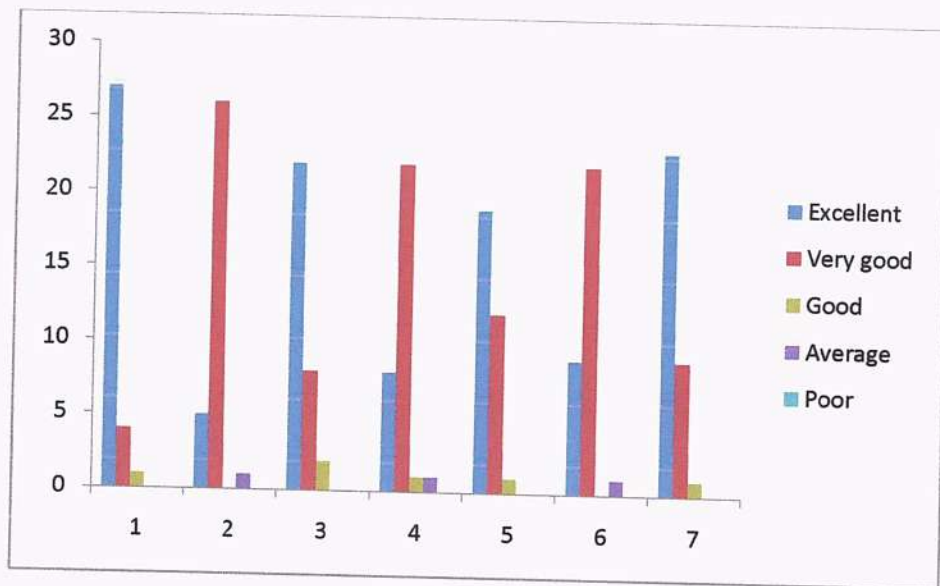
COURSE: Pharm.D

Total Number of Participants: 32

S.No.	Parameters	Evaluation Parameters				
		Excellent	Very good	Good	Average	Poor
1.	How do you rate the coverage of syllabus in time?	27	4	1	0	0
2.	How do you rate the objectives stated and relevance to the course content?	5	26	0	1	0
3.	How do you rate the laboratory experiments correlate with the theory?	22	8	2	0	0
4.	How do you rate the coverage of the curriculum in catering to your professional needs?	8	22	1	1	0
5.	How do you rate the relevance of the courses in the curriculum and its contents?	19	12	1	0	0
6.	How do you rate the add on / value added courses offered to you in the curriculum?	9	22	0	1	0
7.	How do you rate the evaluation scheme designed for each of the course?	23	9	1	0	0



Principal
Vaagdevi College of Pharmacy
Hanamkonda, Warangal-506 001



Principal
 Vaagdevi College of Pharmacy
 Hanamkonda, Warangal-506 001



VISWAMBHARA EDUCATIONAL SOCIETY
VAAGDEVI COLLEGE OF PHARMACY

(Approved by AICTE & PCI, New Delhi & affiliated to Kakatiya University, Warangal, T.S)
Ramnagar Dist. Hanumakonda- 506001, (T.S)

STUDENTS FEEDBACK ON CURRICULUM

ACADEMIC YEAR 2021-2022

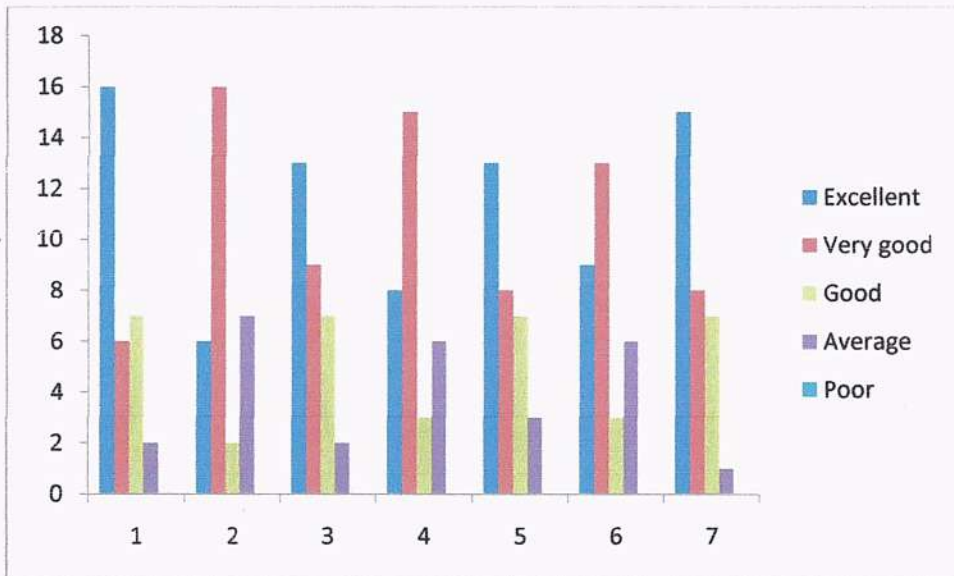
COURSE: M.Pharmacy

Total Number of Participants: 31

S.No.	Parameters	Evaluation Parameters				
		Excellent	Very good	Good	Average	Poor
1.	How do you rate the coverage of syllabus in time?	16	6	7	2	0
2.	How do you rate the objectives stated and relevance to the course content?	6	16	2	7	0
3.	How do you rate the laboratory experiments correlate with the theory?	13	9	7	2	0
4.	How do you rate the coverage of the curriculum in catering to your professional needs?	8	15	3	6	0
5.	How do you rate the relevance of the courses in the curriculum and its contents?	13	8	7	3	0
6.	How do you rate the add on/ value added courses offered to you in the curriculum?	9	13	3	6	0
7.	How do you rate the evaluation scheme designed for each of the course?	15	8	7	1	0




Principal
Vaagdevi College of Pharmacy
Hanamkonda, Warangal-506 001



Report

Comment by Principal

ICT enabled classrooms were increased to continuation of classes for the better delivery of the course curriculum.



Principal
Vaagdevi College of Pharmacy
 Hanamkonda, Warangal-506 001



VISWAMBHARA EDUCATIONAL SOCIETY
VAAGDEVI COLLEGE OF PHARMACY

(Approved by AICTE & PCI, New Delhi & affiliated to Kakatiya University, Warangal, T.S)
Ramnagar Dist. Hanumakonda- 506001, (T.S)

FACULTY FEEDBACK ON CURRICULUM

ACADEMIC YEAR 2021-2022

Total Number of Participants: 43

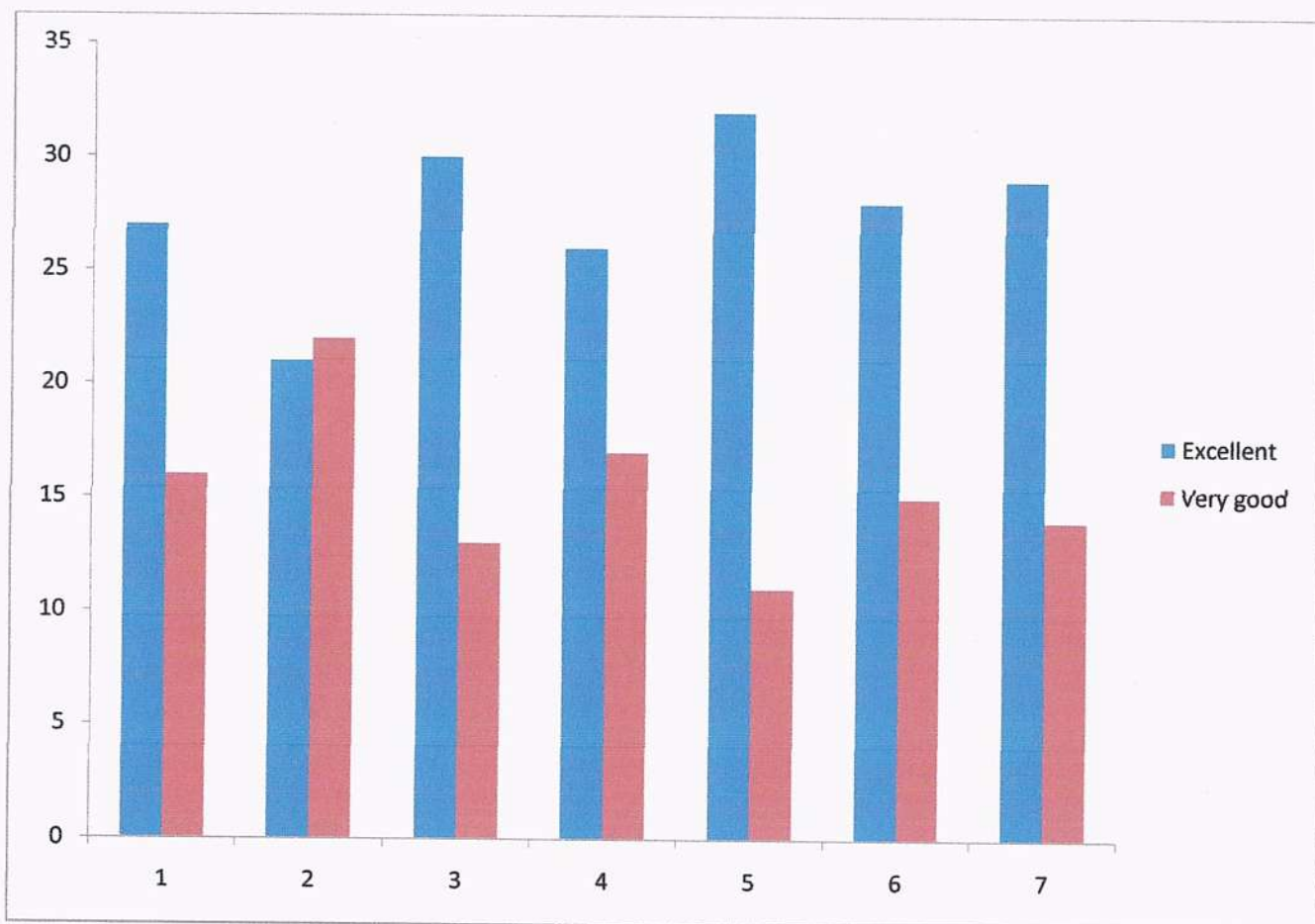
S.No.	Parameters	Evaluation Parameters				
		Excellent	Very good	Good	Average	Poor
1.	How do you rate the coverage of the curriculum in catering to your professional needs?	27	16	-	-	-
2.	How do you rate the relevance of the courses in the curriculum in helping students to attain the program outcomes?	21	22	-	-	-
3.	How do you rate the relevance of the curriculum in relation to latest technology or emerging trends in the industry?	30	13	-	-	-
4.	How do you rate the usefulness of training given to you for effective teaching?	26	17	-	-	-
5.	How do you rate the relevance of courses in curriculum in making student employable?	32	11	-	-	-
6.	How do you rate the facilities for delivering the course content effectively?	28	15	-	-	-
7.	How do you rate the relevance of the add on / value added courses offered to the students in the curriculum?	29	14	-	-	-



Principal

Vaagdevi College of Pharmacy
Hanamkonda, Warangal-506 001

Principal



Report

Comment by Principal

It is instructed to all faculties to enroll in online courses available in SWAYAM portal related to their area of expertise which adds up additional knowledge.



Principal
Vaagdevi College of Pharmacy
 Hanamkonda, Warangal-506 001



VISWAMBHARA EDUCATIONAL SOCIETY

VAAGDEVI COLLEGE OF PHARMACY

(Approved by AICTE & PCI, New Delhi & affiliated to Kakatiya University, Warangal, T.S)
Ramnagar Dist. Hanumakonda- 506001, (T.S)

ALUMNI FEEDBACK ON CURRICULUM

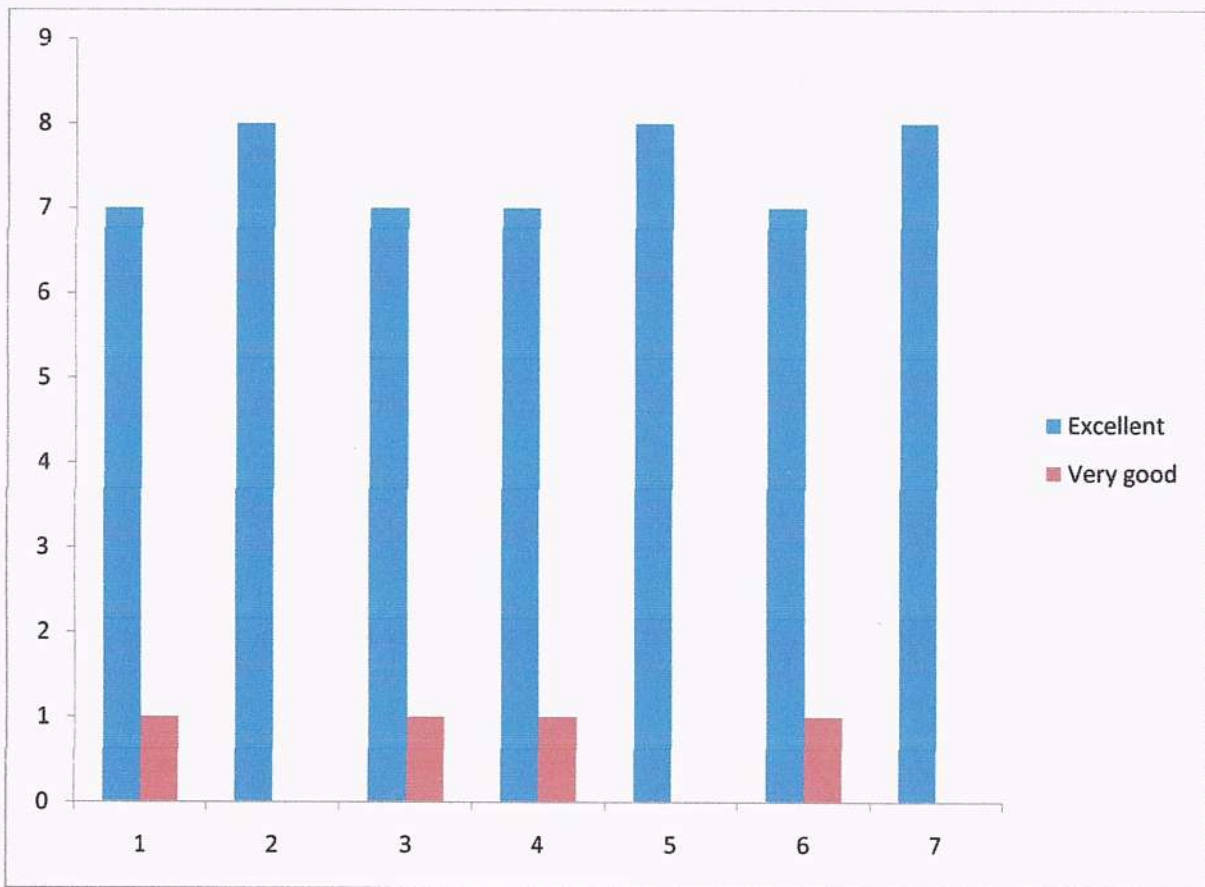
ACADEMIC YEAR 2021-2022

Total Number of Participants: 8

S.No.	Parameters	Evaluation Parameters				
		Excellent	Very good	Good	Average	Poor
1.	How do you rate the relevance of courses in curriculum in attaining the required skills competencies to your job?	7	1	-	-	-
2.	How do you rate the relevance of the courses in the curriculum and its contents?	8	0	-	-	-
3.	How do you rate the relevance of the curriculum in relation to latest technology or emerging trends in the industry?	7	1	-	-	-
4.	How do you rate the coverage of the curriculum in catering to your professional needs?	7	1	-	-	-
5.	How do you rate the objectives stated and relevance to the course content?	8	0	-	-	-
6.	How do you rate the add on/ value added courses offered to you in the curriculum in developing disposition in your career?	7	1	-	-	-
7.	How do you rate the relevance of curriculum in career orientation?	8	0	-	-	-



Principal
Vaagdevi College of Pharmacy
Hanamkonda, Warangal-506 001
Principal
Vaagdevi College



Report

Comment by Principal

As part of regular curriculum practice, we are involving Alumni for the purpose of seminar conduction and various event activities.



Principal
Vaagdevi College of Pharmacy
 Hanamkonda, Warangal-506 001



VISWAMBHARA EDUCATIONAL SOCIETY
VAAGDEVI COLLEGE OF PHARMACY

(Approved by AICTE & PCI, New Delhi & affiliated to Kakatiya University, Warangal, T.S)
Ramnagar Dist. Hanumakonda- 506001, (T.S)

EMPLOYER FEEDBACK ON CURRICULUM

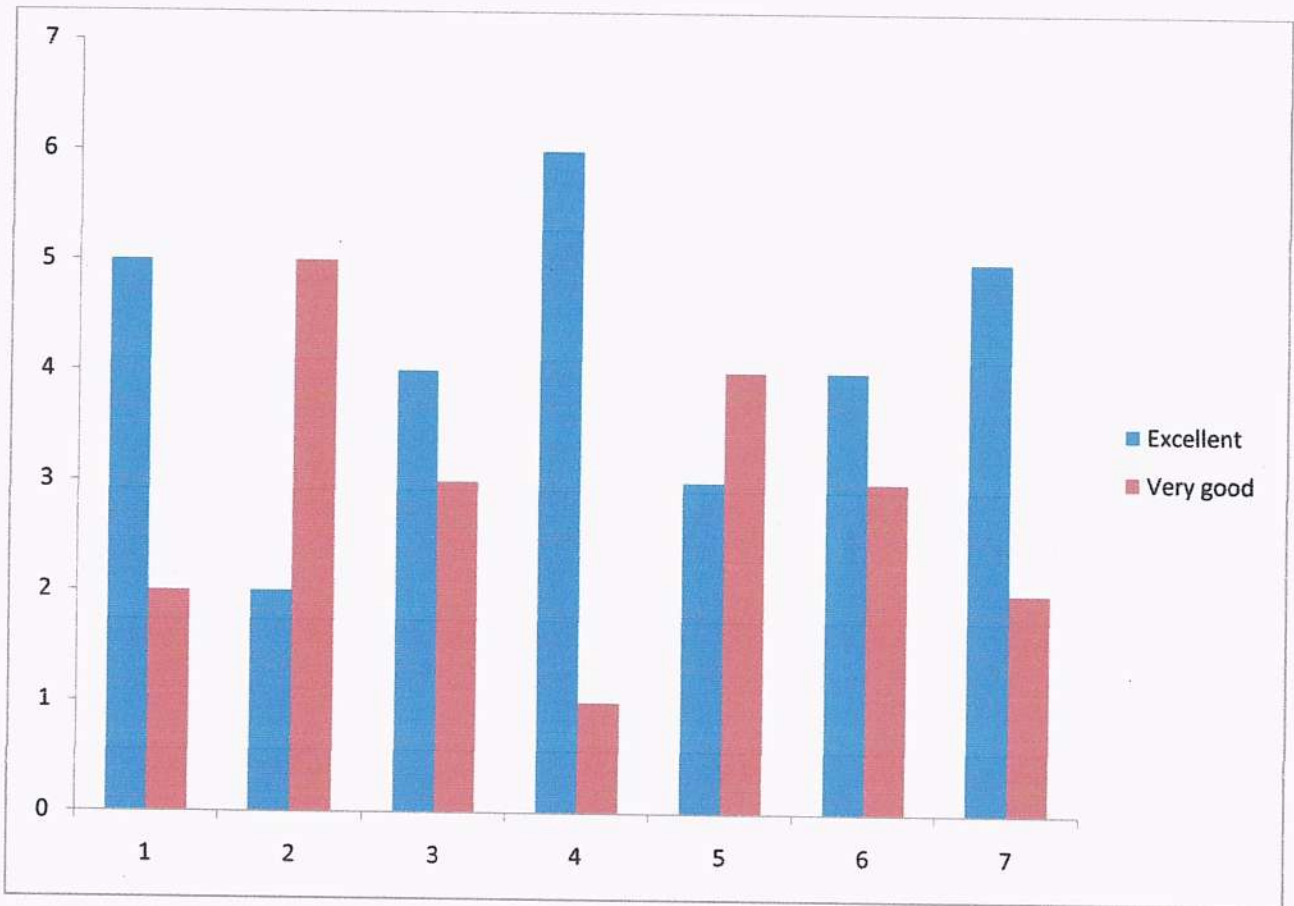
ACADEMIC YEAR 2021-2022

Total Number of Participants: 7

S.No.	Parameters	Evaluation Parameters				
		Excellent	Very good	Good	Average	Poor
1.	How would you rate the current curriculum in relevant in developing the industry expected outcomes from the candidate?	5	2	-	-	-
2.	How do you rate the curriculum is relevant in developing a dedicated attitude in the candidate?	2	5	-	-	-
3.	How do you rate the current curriculum is relevant in addressing the needs/problems of the client groups?	4	3	-	-	-
4.	How would you rate the proficiency of our students working with you?	6	1	-	-	-
5.	Skill sets	3	4	-	-	-
6.	Competencies	4	3	-	-	-
7.	Disposition	5	2	-	-	-



Principal
Vaagdevi College of Pharmacy
Hanamkonda, Warangal-506 001



Report

Comment by Principal

Employers were expecting a better proficiency of our students working with them.



Principal
Vaagdevi College of Pharmacy
 Hanamkonda, Warangal-506 001



STUDENTS FEEDBACK ON CURRICULUM

ACADEMIC YEAR 2020-2021

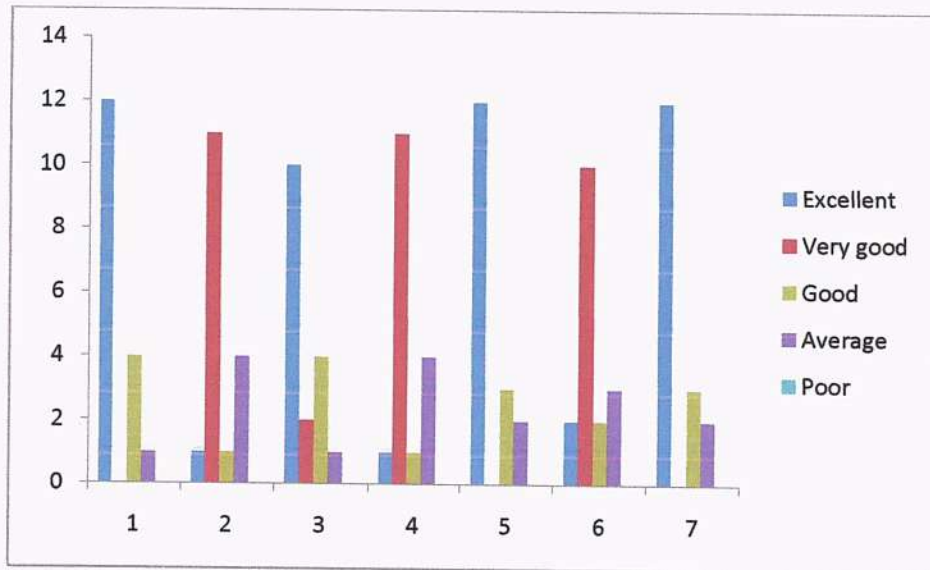
COURSE: B.Pharmacy

Total Number of Participants: 17

S.No.	Parameters	Evaluation Parameters				
		Excellent	Very good	Good	Average	Poor
1.	How do you rate the coverage of syllabus in time?	12	0	4	1	0
2.	How do you rate the objectives stated and relevance to the course content?	1	11	1	4	0
3.	How do you rate the laboratory experiments correlate with the theory?	10	2	4	1	0
4.	How do you rate the coverage of the curriculum in catering to your professional needs?	1	11	1	4	0
5.	How do you rate the relevance of the courses in the curriculum and its contents?	12	0	3	2	0
6.	How do you rate the add on/ value added courses offered to you in the curriculum?	2	10	2	3	0
7.	How do you rate the evaluation scheme designed for each of the course?	12	0	3	2	0



Principal
Vaagdevi College of Pharmacy
 Hanamkonda, Warangal-506 001



Principal
Vaagdevi College of Pharmacy
 Hanamkonda, Warangal-506 001



VISWAMBHARA EDUCATIONAL SOCIETY
VAAGDEVI COLLEGE OF PHARMACY

(Approved by AICTE & PCI, New Delhi & affiliated to Kakatiya University, Warangal, T.S)
Ramnagar Dist. Hanumakonda- 506001, (T.S)

STUDENTS FEEDBACK ON CURRICULUM

ACADEMIC YEAR 2020-2021

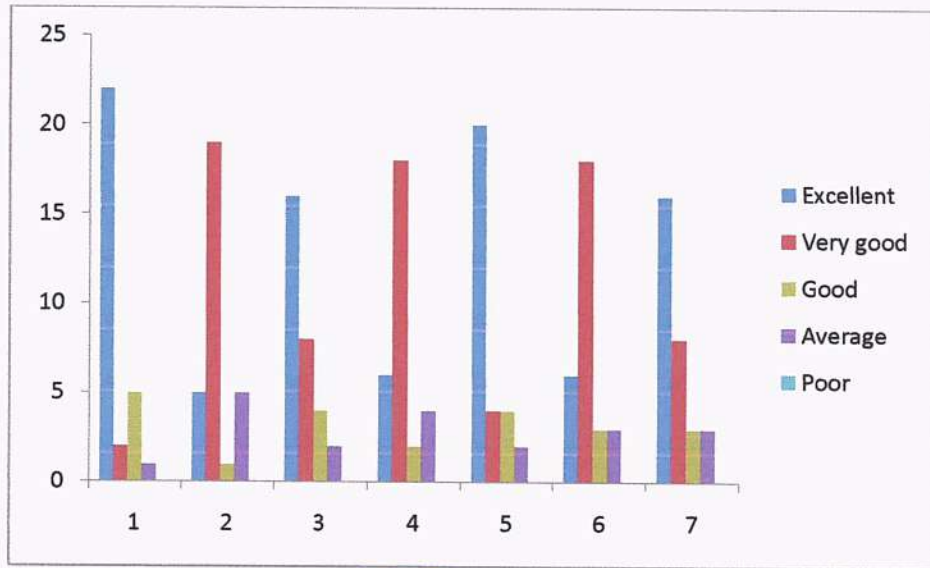
COURSE: Pharm.D

Total Number of Participants: 30

S.No.	Parameters	Evaluation Parameters				
		Excellent	Very good	Good	Average	Poor
1.	How do you rate the coverage of syllabus in time?	22	2	5	1	0
2.	How do you rate the objectives stated and relevance to the course content?	5	19	1	5	0
3.	How do you rate the laboratory experiments correlate with the theory?	16	8	4	2	0
4.	How do you rate the coverage of the curriculum in catering to your professional needs?	6	18	2	4	0
5.	How do you rate the relevance of the courses in the curriculum and its contents?	20	4	4	2	0
6.	How do you rate the add on/ value added courses offered to you in the curriculum?	6	18	3	3	0
7.	How do you rate the evaluation scheme designed for each of the course?	16	8	3	3	0



Principal
Vaagdevi College of Pharmacy
Hanamkonda, Warangal-506 001



Principal
Vaagdevi College of Pharmacy
 Hanamkonda, Warangal-506 001



VISWAMBHARA EDUCATIONAL SOCIETY
VAAGDEVI COLLEGE OF PHARMACY

(Approved by AICTE & PCI, New Delhi & affiliated to Kakatiya University, Warangal, T.S)
Ramnagar Dist. Hanumakonda- 506001, (T.S)

STUDENTS FEEDBACK ON CURRICULUM


ACADEMIC YEAR 2020-2021

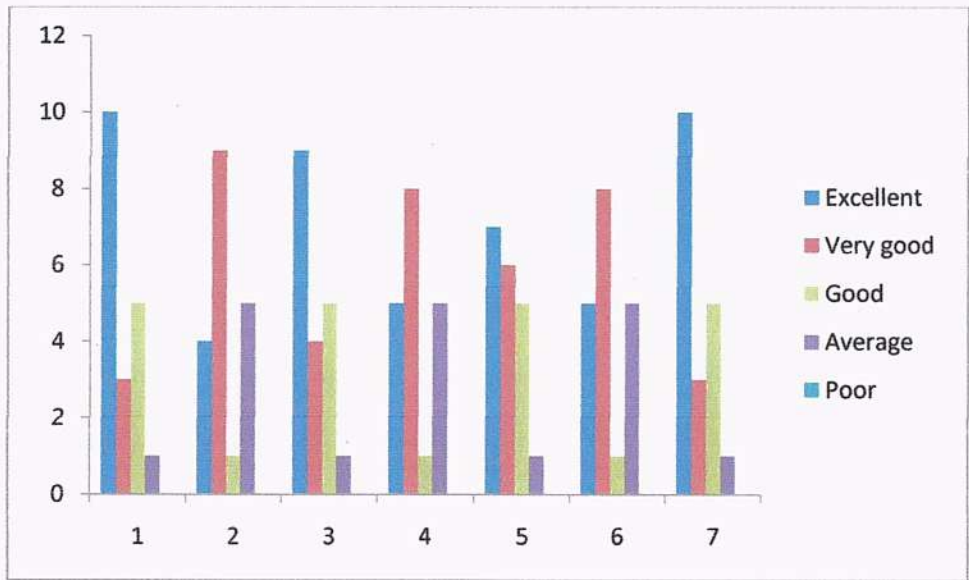
COURSE: M.Pharmacy

Total Number of Participants: 19

S.No.	Parameters	Evaluation Parameters				
		Excellent	Very good	Good	Average	Poor
1.	How do you rate the coverage of syllabus in time?	10	3	5	1	0
2.	How do you rate the objectives stated and relevance to the course content?	4	9	1	5	0
3.	How do you rate the laboratory experiments correlate with the theory?	9	4	5	1	0
4.	How do you rate the coverage of the curriculum in catering to your professional needs?	5	8	1	5	0
5.	How do you rate the relevance of the courses in the curriculum and its contents?	7	6	5	1	0
6.	How do you rate the add on/ value added courses offered to you in the curriculum?	5	8	1	5	0
7.	How do you rate the evaluation scheme designed for each of the course?	10	3	5	1	0




Principal
Vaagdevi College of Pharmacy
Hanamkonda, Warangal-506 001



Report

Comment by Principal

Personality development programmes were conducted for the students.



Principal
Vaagdevi College of Pharmacy
 Hanamkonda, Warangal-506 001



VISWAMBHARA EDUCATIONAL SOCIETY
VAAGDEVI COLLEGE OF PHARMACY

(Approved by AICTE & PCI, New Delhi & affiliated to Kakatiya University, Warangal, T.S)
Ramnagar Dist. Hanumakonda- 506001, (T.S)

FACULTY FEEDBACK ON CURRICULUM

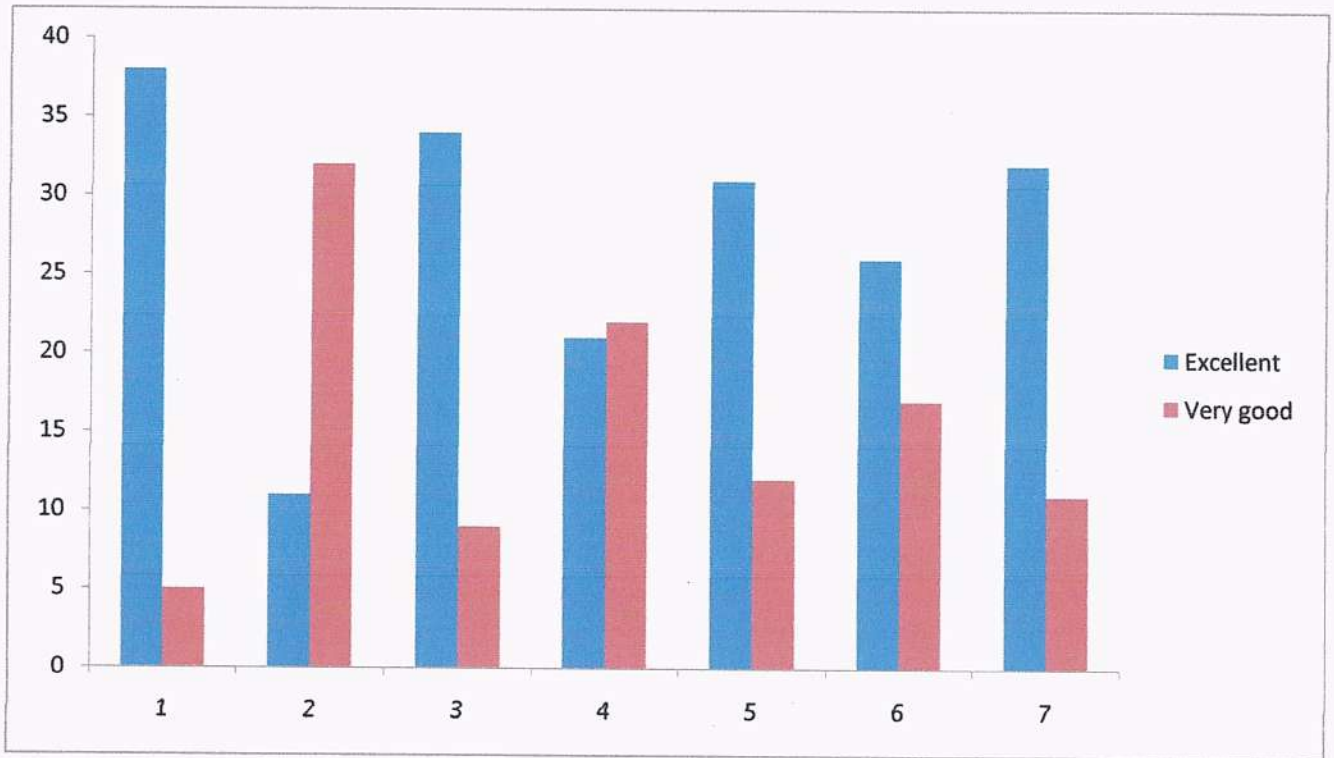
ACADEMIC YEAR 2020-2021

Total Number of Participants: 43

S.No.	Parameters	Evaluation Parameters				
		Excellent	Very good	Good	Average	Poor
1.	How do you rate the coverage of the curriculum in catering to your professional needs?	38	5	-	-	-
2.	How do you rate the relevance of the courses in the curriculum in helping students to attain the program outcomes?	11	32	-	-	-
3.	How do you rate the relevance of the curriculum in relation to latest technology or emerging trends in the industry?	34	9	-	-	-
4.	How do you rate the usefulness of training given to you for effective teaching?	21	22	-	-	-
5.	How do you rate the relevance of courses in curriculum in making student employable?	31	12	-	-	-
6.	How do you rate the facilities for delivering the course content effectively?	26	17	-	-	-
7.	How do you rate the relevance of the add on/ value added courses offered to the students in the curriculum?	32	11	-	-	-



Principal
Vaagdevi College of Pharmacy
Hanamkonda, Warangal-506 001
Principal



Report

Comment by Principal

Faculty development programs to be conducted E-content development.



Principal
 Vaagdevi College of Pharmacy
 Hanamkonda, Warangal-506 001



VISWAMBHARA EDUCATIONAL SOCIETY

VAAGDEVI COLLEGE OF PHARMACY

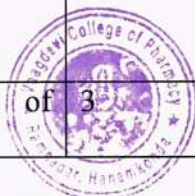
(Approved by AICTE & PCI, New Delhi & affiliated to Kakatiya University, Warangal, T.S)
Ramnagar Dist. Hanamakonda- 506001, (T.S)

ALUMNI FEEDBACK ON CURRICULUM

ACADEMIC YEAR 2020-2021

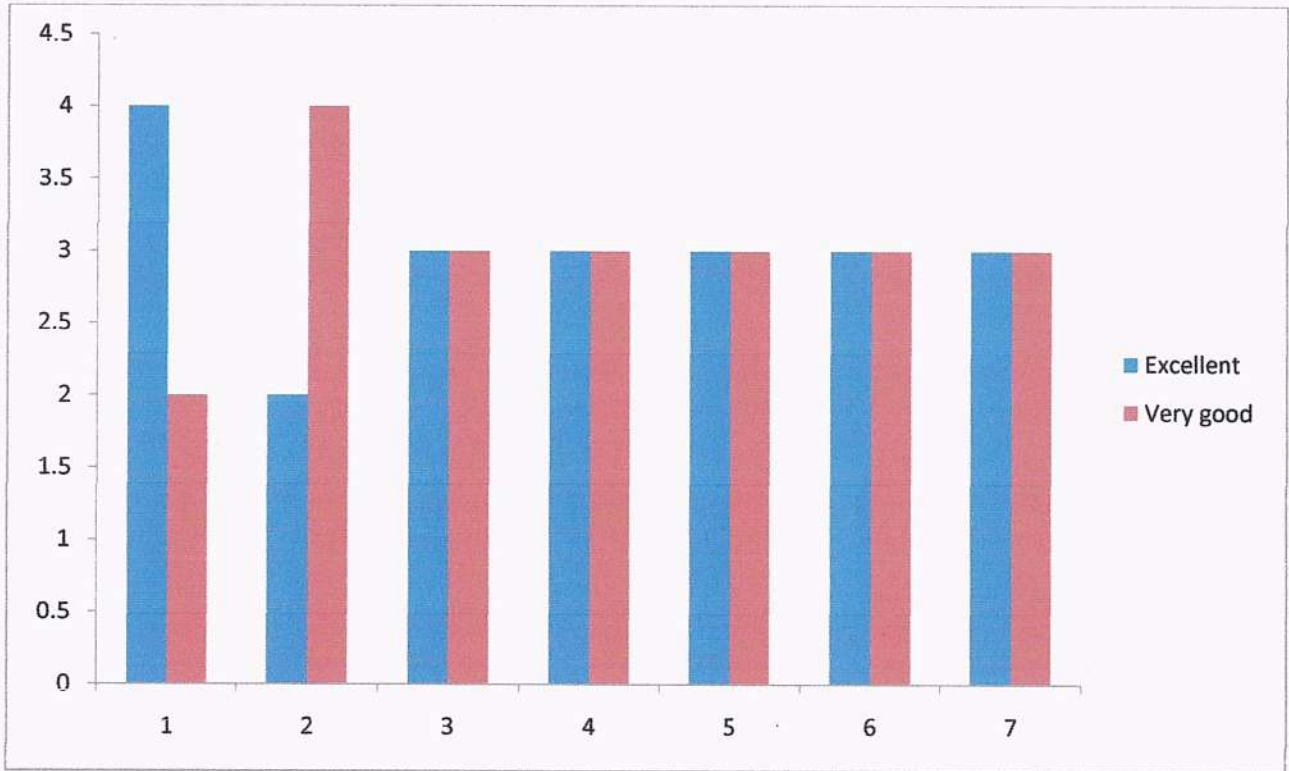
Total Number of Participants: 6

S.No.	Parameters	Evaluation Parameters				
		Excellent	Very good	Good	Average	Poor
1.	How do you rate the relevance of courses in curriculum in attaining the required skills competencies to your job?	4	2	-	-	-
2.	How do you rate the relevance of the courses in the curriculum and its contents?	2	4	-	-	-
3.	How do you rate the relevance of the curriculum in relation to latest technology or emerging trends in the industry?	3	3	-	-	-
4.	How do you rate the coverage of the curriculum in catering to your professional needs?	3	3	-	-	-
5.	How do you rate the objectives stated and relevance to the course content?	3	3	-	-	-
6.	How do you rate the add on / value added courses offered to you in the curriculum in developing disposition in your career?	3	3	-	-	-
7.	How do you rate the relevance of curriculum in career orientation?	3	3	-	-	-



Principal

Vaagdevi College of Pharmacy
Hanamakonda, Warangal-506 001



Report

Comment by Principal

Students were encouraged to take up research based on application projects.




Principal
Vaagdevi College of Pharmacy
Hanamkonda, Warangal-506 001



VISWAMBHARA EDUCATIONAL SOCIETY
VAAGDEVI COLLEGE OF PHARMACY

(Approved by AICTE & PCI, New Delhi & affiliated to Kakatiya University, Warangal, T.S)
Ramnagar Dist. Hanumakonda- 506001, (T.S)

EMPLOYER FEEDBACK ON CURRICULUM

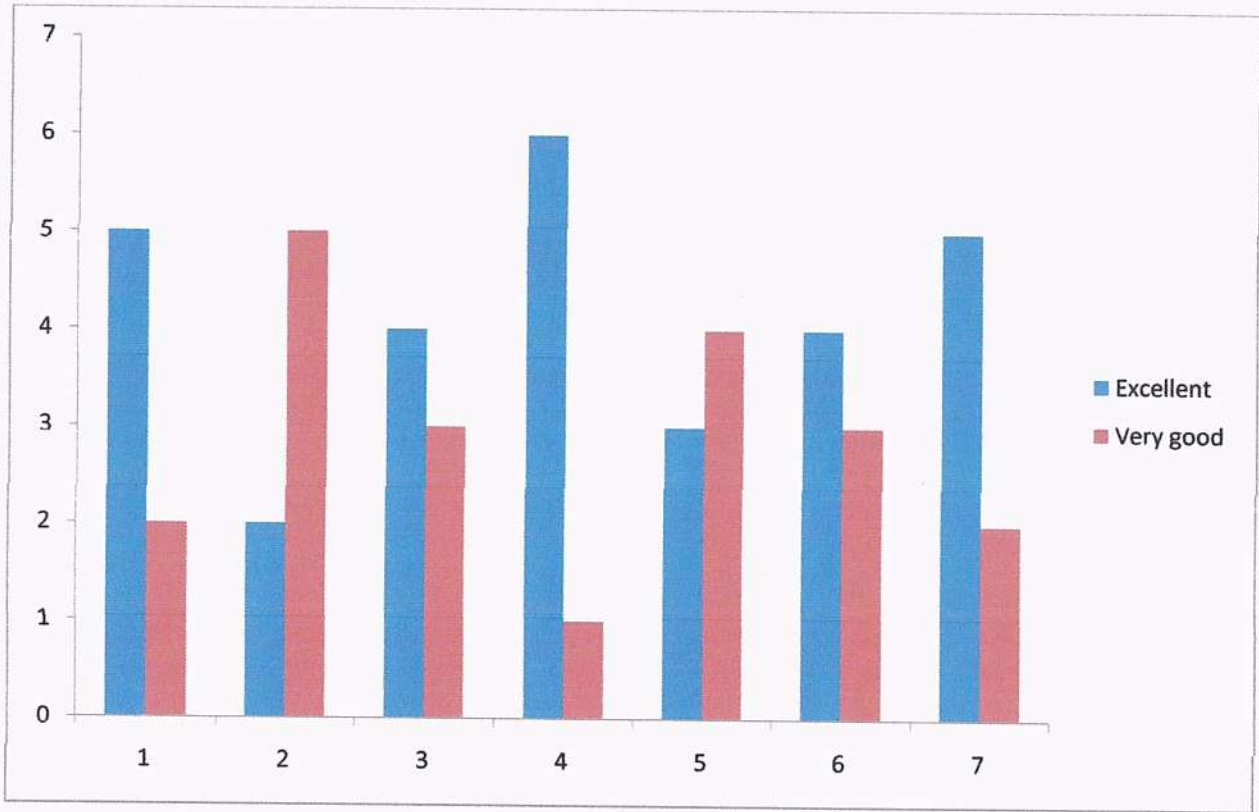
ACADEMIC YEAR 2020-2021

Total Number of Participants: 7

S.No.	Parameters	Evaluation Parameters				
		Excellent	Very good	Good	Average	Poor
1.	How would you rate the current curriculum in relevant in developing the industry expected outcomes from the candidate?	5	2	-	-	-
2.	How do you rate the curriculum is relevant in developing a dedicated attitude in the candidate?	2	5	-	-	-
3.	How do you rate the current curriculum is relevant in addressing the needs/problems of the client groups?	4	3	-	-	-
4.	How would you rate the proficiency of our students working with you?	6	1	-	-	-
5.	Skill sets	3	4	-	-	-
6.	Competencies	4	3	-	-	-
7.	Disposition	5	2	-	-	-



Principal
Vaagdevi College of Pharmacy
Hanamkonda, Warangal-506 001



Report

Comment by Principal

Industry visits are arranged to enrich the education.



Principal
Vaagdevi College of Pharmacy
Hanamkonda, Warangal-506 001



VISWAMBHARA EDUCATIONAL SOCIETY
VAAGDEVI COLLEGE OF PHARMACY

(Approved by AICTE & PCI, New Delhi & affiliated to Kakatiya University, Warangal, T.S)
Ramnagar Dist. Hanumakonda- 506001, (T.S)

STUDENTS FEEDBACK ON CURRICULUM

ACADEMIC YEAR 2019-2020

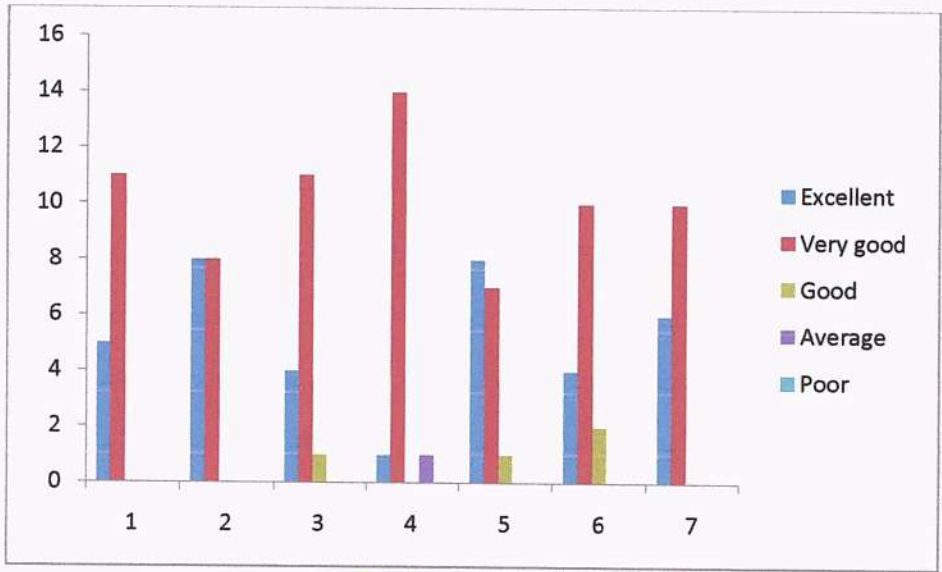
COURSE: B.Pharmacy

Total Number of Participants: 16

S.No.	Parameters	Evaluation Parameters				
		Excellent	Very good	Good	Average	Poor
1.	How do you rate the coverage of syllabus in time?	5	11	0	0	0
2.	How do you rate the objectives stated and relevance to the course content?	8	8	0	0	0
3.	How do you rate the laboratory experiments correlate with the theory?	4	11	1	0	0
4.	How do you rate the coverage of the curriculum in catering to your professional needs?	1	14	0	1	0
5.	How do you rate the relevance of the courses in the curriculum and its contents?	8	7	1	0	0
6.	How do you rate the add on/ value added courses offered to you in the curriculum?	4	10	2	0	0
7.	How do you rate the evaluation scheme designed for each of the course?	6	10	0	0	0




Principal
Vaagdevi College of Pharmacy
Hanamkonda, Warangal-506 001




Principal
Vaagdevi College of Pharmacy
 Hanamkonda, Warangal-506 001



VISWAMBHARA EDUCATIONAL SOCIETY
VAAGDEVI COLLEGE OF PHARMACY

(Approved by AICTE & PCI, New Delhi & affiliated to Kakatiya University, Warangal, T.S)
Ramnagar Dist. Hanumakonda- 506001, (T.S)

STUDENTS FEEDBACK ON CURRICULUM

ACADEMIC YEAR 2019-2020

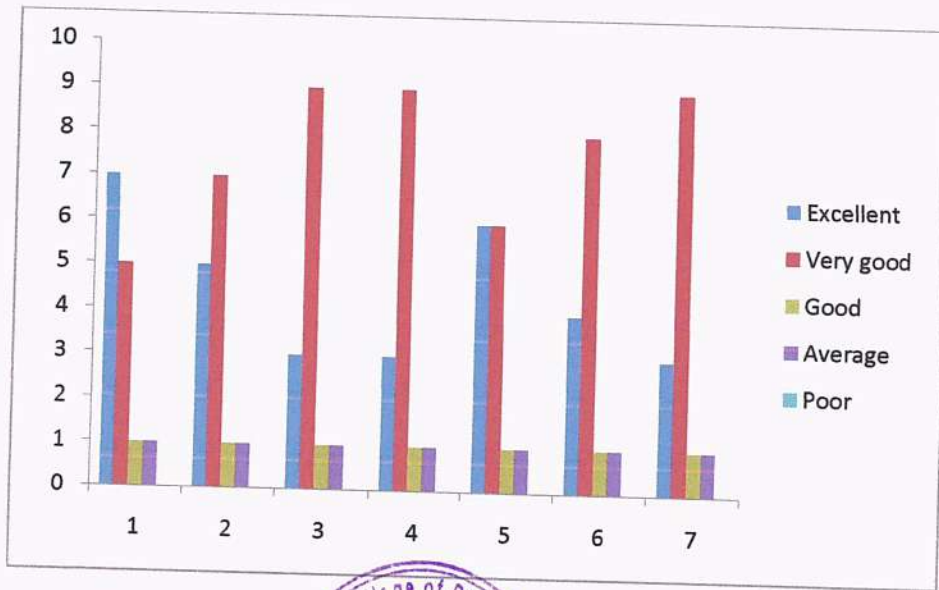
COURSE: Pharm.D

Total Number of Participants: 14

S.No.	Parameters	Evaluation Parameters				
		Excellent	Very good	Good	Average	Poor
1.	How do you rate the coverage of syllabus in time?	7	5	1	1	0
2.	How do you rate the objectives stated and relevance to the course content?	5	7	1	1	0
3.	How do you rate the laboratory experiments correlate with the theory?	3	9	1	1	0
4.	How do you rate the coverage of the curriculum in catering to your professional needs?	3	9	1	1	0
5.	How do you rate the relevance of the courses in the curriculum and its contents?	6	6	1	1	0
6.	How do you rate the add on / value added courses offered to you in the curriculum?	4	8	1	1	0
7.	How do you rate the evaluation scheme designed for each of the course?	3	9	1	1	0




Principal
Vaagdevi College of Pharmacy
Hanamkonda, Warangal-506 001



Principal
Vaagdevi College of Pharmacy
 Hanamkonda, Warangal-506 001



VISWAMBHARA EDUCATIONAL SOCIETY
VAAGDEVI COLLEGE OF PHARMACY

(Approved by AICTE & PCI, New Delhi & affiliated to Kakatiya University, Warangal, T.S)
Ramnagar Dist. Hanumakonda- 506001, (T.S)

STUDENTS FEEDBACK ON CURRICULUM

ACADEMIC YEAR 2019-2020

COURSE: M.Pharmacy

Total Number of Participants: 21

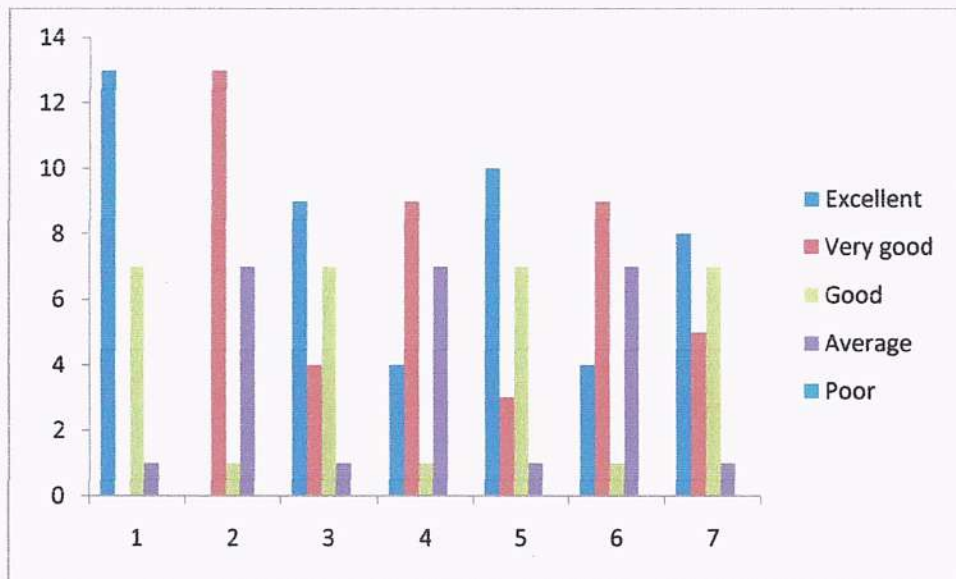
S.No.	Parameters	Evaluation Parameters				
		Excellent	Very good	Good	Average	Poor
1.	How do you rate the coverage of syllabus in time?	13	0	7	1	0
2.	How do you rate the objectives stated and relevance to the course content?	0	13	1	7	0
3.	How do you rate the laboratory experiments correlate with the theory?	9	4	7	1	0
4.	How do you rate the coverage of the curriculum in catering to your professional needs?	4	9	1	7	0
5.	How do you rate the relevance of the courses in the curriculum and its contents?	10	3	7	1	0
6.	How do you rate the add on value added courses offered to you in the curriculum?	4	9	1	7	0
7.	How do you rate the evaluation scheme designed for each of the course?	8	5	7	1	0





Principal

Vaagdevi College of Pharmacy
Hanamkonda, Warangal-506 001



Report

Comment by Principal

Students are expecting better professional services from institute and requested for ICT enabled classrooms.



Principal
Vaidyadevi College of Pharmacy
 Hanamankonda, Warangal-506 001



VISWAMBHARA EDUCATIONAL SOCIETY
VAAGDEVI COLLEGE OF PHARMACY

(Approved by AICTE & PCI, New Delhi & affiliated to Kakatiya University, Warangal, T.S)
Ramnagar Dist. Hanumakonda- 506001, (T.S)

FACULTY FEEDBACK ON CURRICULUM

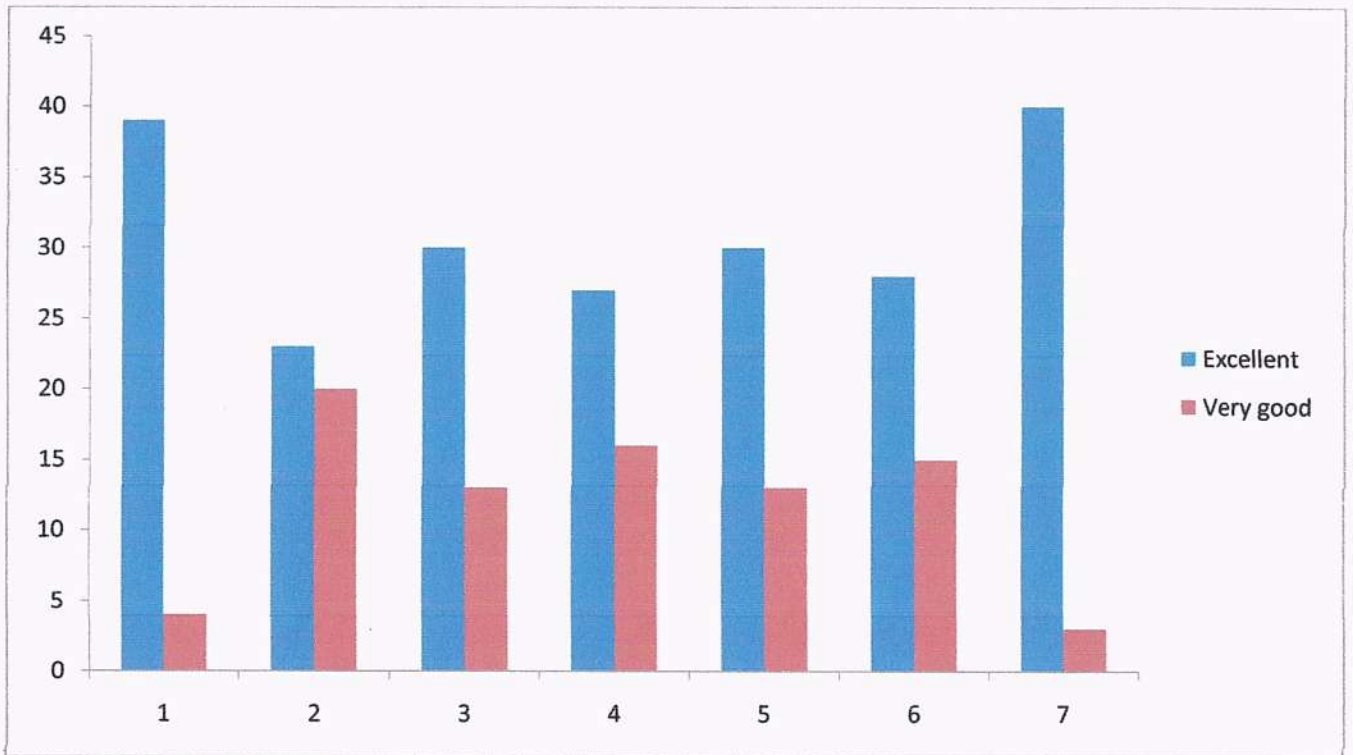
ACADEMIC YEAR 2019-2020

Total Number of Participants: 43

S.No.	Parameters	Evaluation Parameters				
		Excellent	Very good	Good	Average	Poor
1.	How do you rate the coverage of the curriculum in catering to your professional needs?	39	4	-	-	-
2.	How do you rate the relevance of the courses in the curriculum in helping students to attain the program outcomes?	23	20	-	-	-
3.	How do you rate the relevance of the curriculum in relation to latest technology or emerging trends in the industry?	30	13	-	-	-
4.	How do you rate the usefulness of training given to you for effective teaching?	27	16	-	-	-
5.	How do you rate the relevance of courses in curriculum in making student employable?	30	13	-	-	-
6.	How do you rate the facilities for delivering the course content effectively?	28	15	-	-	-
7.	How do you rate the relevance of the add on/ value added courses offered to the students in the curriculum?	40	3	-	-	-



Principal
Vaagdevi College of Pharmacy
Hanamkonda, Warangal-506 001



Report

Comment by Principal

Community postings were to be made available to Pharm.D students.



Principal
Vaagdevi College of Pharmacy
 Hanamkonda, Warangal-506 001



VISWAMBHARA EDUCATIONAL SOCIETY
VAAGDEVI COLLEGE OF PHARMACY

(Approved by AICTE & PCI, New Delhi & affiliated to Kakatiya University, Warangal, T.S)
Ramnagar Dist. Hanumakonda- 506001, (T.S)

ALUMNI FEEDBACK ON CURRICULUM

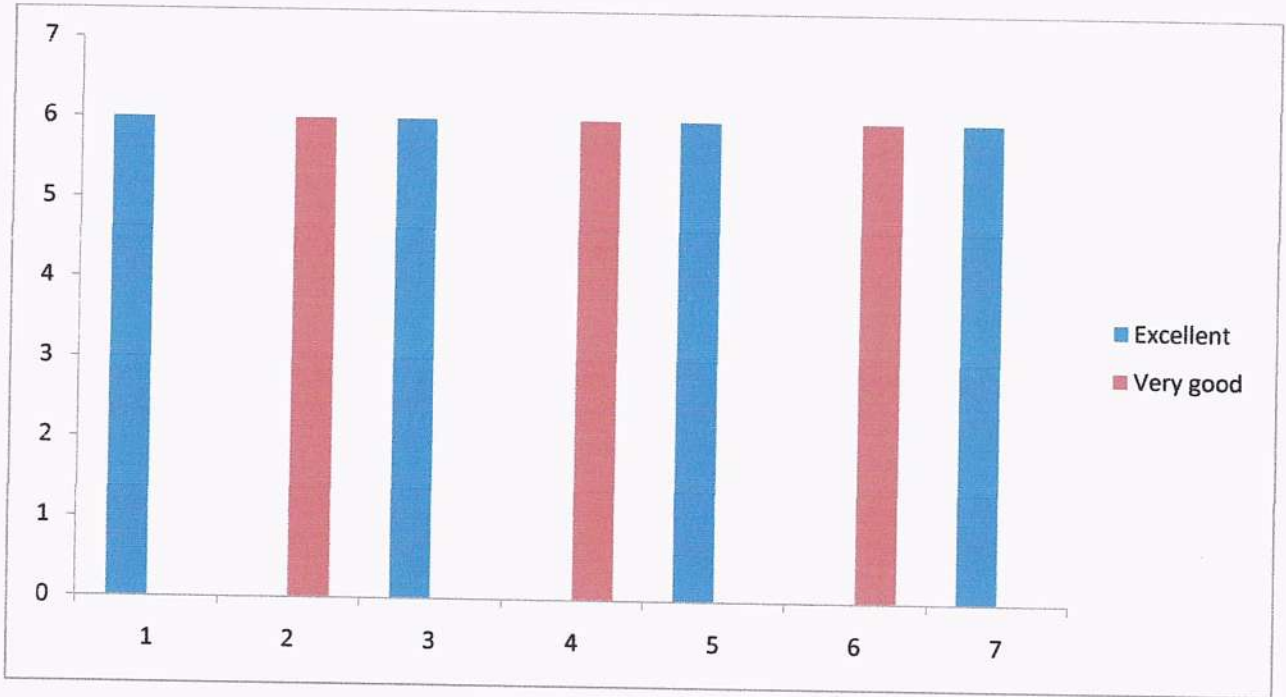
ACADEMIC YEAR 2019-2020

Total Number of Participants: 6

S.No.	Parameters	Evaluation Parameters				
		Excellent	Very good	Good	Average	Poor
1.	How do you rate the relevance of courses in curriculum in attaining the required skills competencies to your job?	6	0	-	-	-
2.	How do you rate the relevance of the courses in the curriculum and its contents?	0	6	-	-	-
3.	How do you rate the relevance of the curriculum in relation to latest technology or emerging trends in the industry?	6	0	-	-	-
4.	How do you rate the coverage of the curriculum in catering to your professional needs?	0	6	-	-	-
5.	How do you rate the objectives stated and relevance to the course content?	6	0	-	-	-
6.	How do you rate the add on/ value added courses offered to you in the curriculum in developing disposition in your career?	0	6	-	-	-
7.	How do you rate the relevance of curriculum in career orientation?	6	0	-	-	-



Principal
Vaagdevi College of Pharmacy
Hanamkonda, Warangal-506 001



Report

Comment by Principal

Entrepreneurial skills of the students were encouraged.



(Handwritten signature in green ink)

Principal
Vaagdevi College of Pharmacy
 Hanamkonda, Warangal-506 001



VISWAMBHARA EDUCATIONAL SOCIETY
VAAGDEVI COLLEGE OF PHARMACY

(Approved by AICTE & PCI, New Delhi & affiliated to Kakatiya University, Warangal, T.S)
Ramnagar Dist. Hanamakonda- 506001, (T.S)

EMPLOYER FEEDBACK ON CURRICULUM

ACADEMIC YEAR 2019-2020

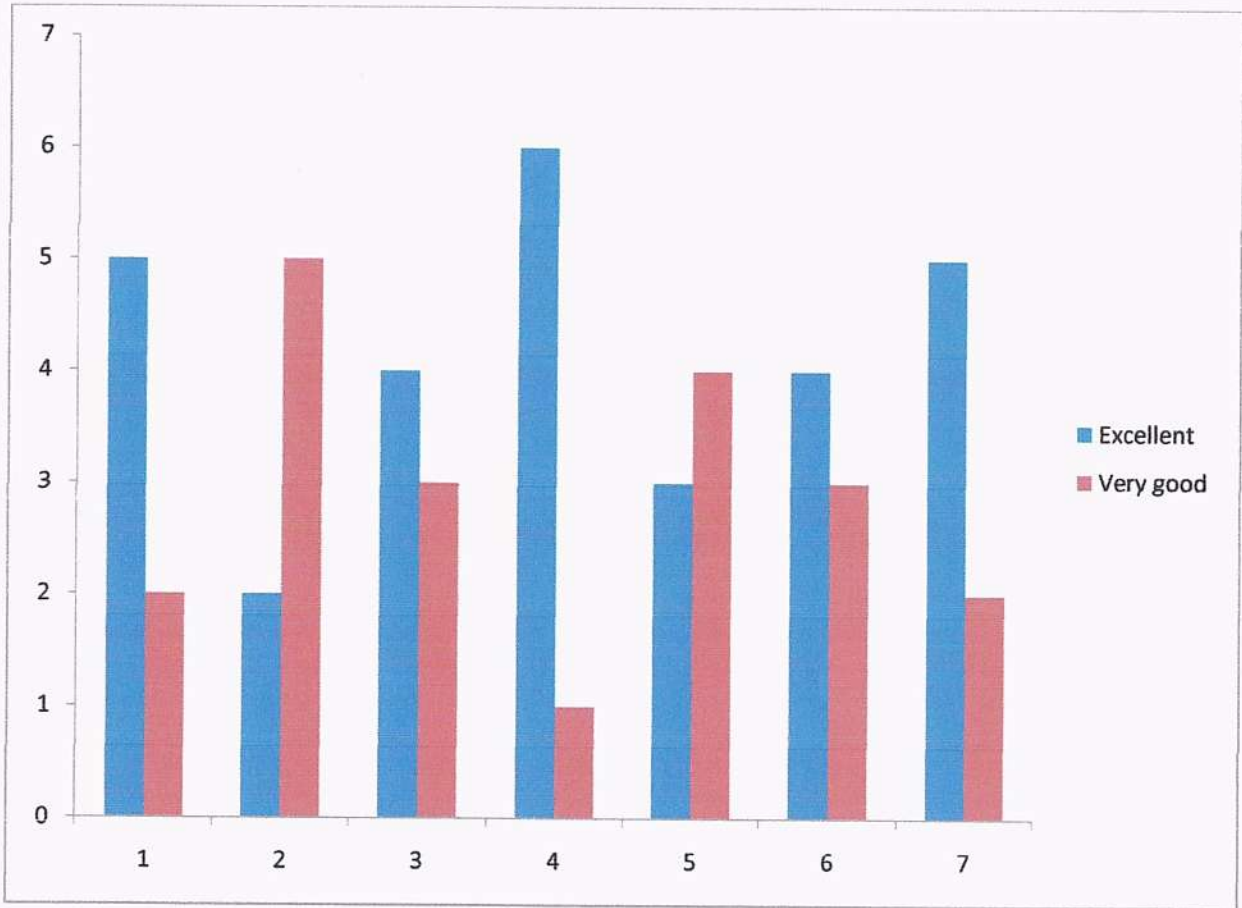
Total Number of Participants: 7

S.No.	Parameters	Evaluation Parameters				
		Excellent	Very good	Good	Average	Poor
1.	How would you rate the current curriculum in relevant in developing the industry expected outcomes from the candidate?	5	2	-	-	-
2.	How do you rate the curriculum is relevant in developing a dedicated attitude in the candidate?	2	5	-	-	-
3.	How do you rate the current curriculum is relevant in addressing the needs/problems of the client groups?	4	3	-	-	-
4.	How would you rate the proficiency of our students working with you?	6	1	-	-	-
5.	Skill sets	3	4	-	-	-
6.	Competencies	4	3	-	-	-
7.	Disposition	5	2	-	-	-



(Handwritten signature)

Principal
Vaagdevi College of Pharmacy
Hanamakonda, Warangal-506 001



Report

Comment by Principal

Learning new techniques and relationship with superiors/subordinates.



Principal
Vaagdevi College of Pharmacy
 Hanamkonda, Warangal-506 001



VISWAMBHARA EDUCATIONAL SOCIETY
VAAGDEVI COLLEGE OF PHARMACY

(Approved by AICTE & PCI, New Delhi & affiliated to Kakatiya University, Warangal, T.S)
Ramnagar Dist. Hanumakonda- 506001, (T.S)

STUDENTS FEEDBACK ON CURRICULUM


ACADEMIC YEAR 2018-2019

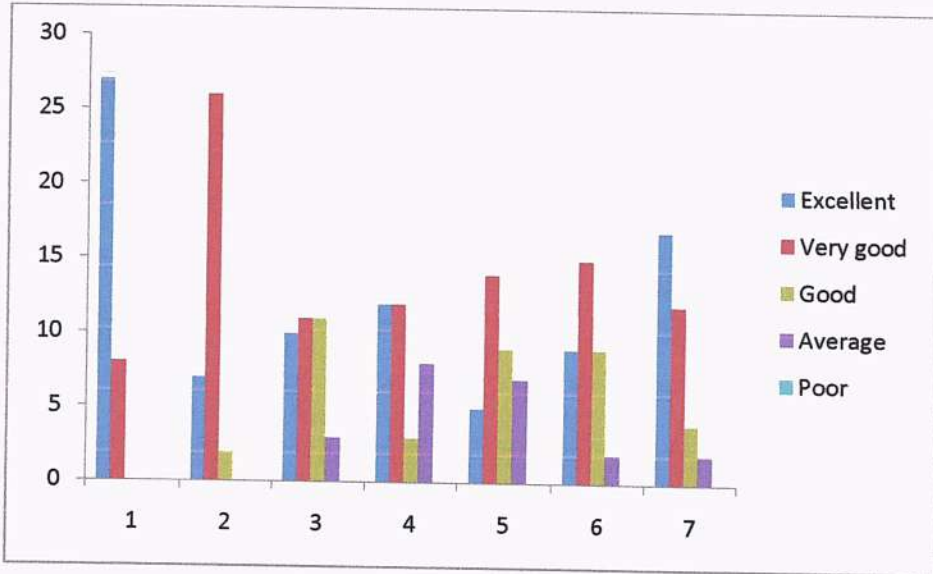
COURSE: B.Pharmacy


Total Number of Participants: 35

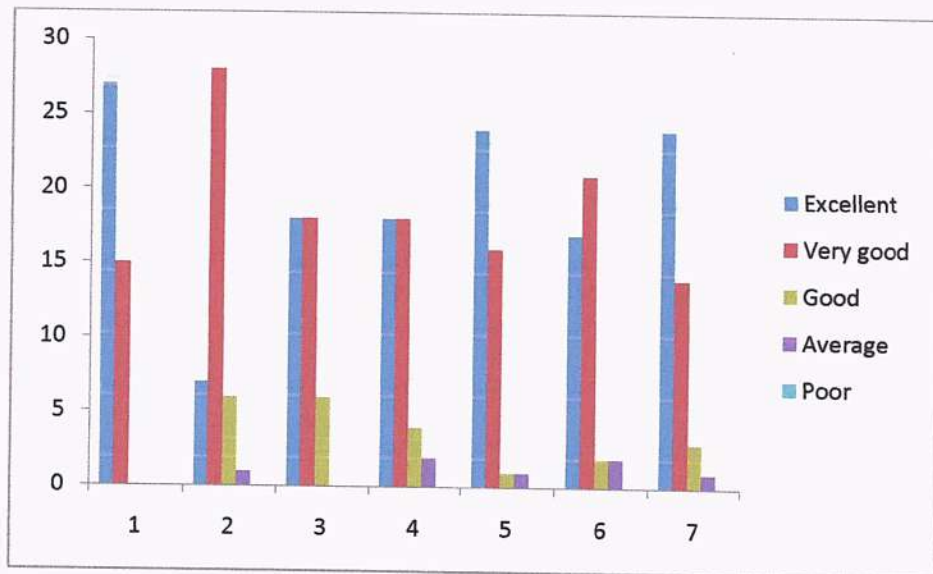
S.No.	Parameters	Evaluation Parameters				
		Excellent	Very good	Good	Average	Poor
1.	How do you rate the coverage of syllabus in time?	27	8	0	0	0
2.	How do you rate the objectives stated and relevance to the course content?	7	26	2	0	0
3.	How do you rate the laboratory experiments correlate with the theory?	10	11	11	3	0
4.	How do you rate the coverage of the curriculum in catering to your professional needs?	12	12	3	8	0
5.	How do you rate the relevance of the courses in the curriculum and its contents?	5	14	9	7	0
6.	How do you rate the add on/ value added courses offered to you in the curriculum?	9	15	9	2	0
7.	How do you rate the evaluation scheme designed for each of the course?	17	12	4	2	0



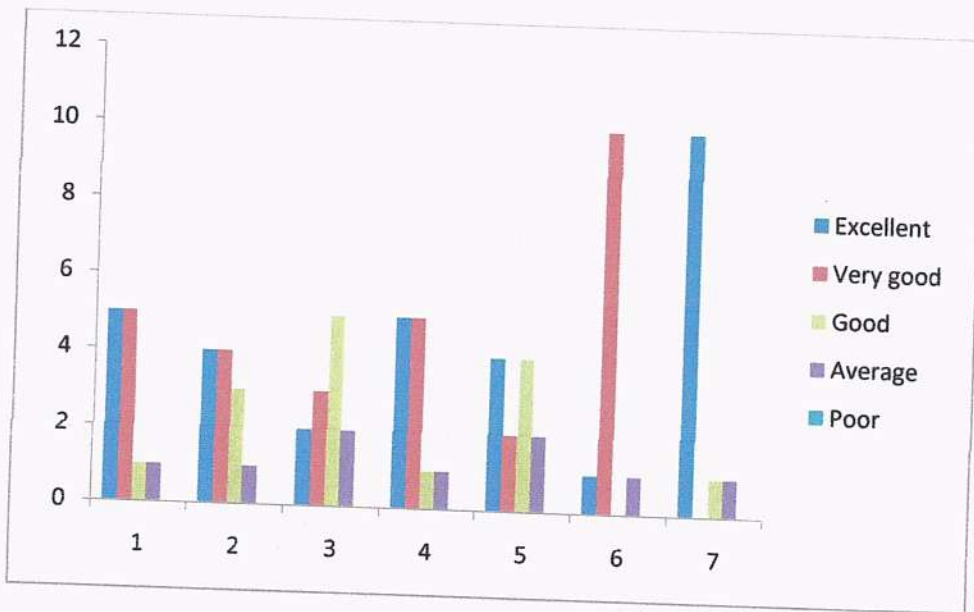

Principal
Vaagdevi College of Pharmacy
Hanamkonda, Warangal-506 001




Principal
Vaagdevi College of Pharmacy
 Hanamkonda, Warangal-506 001




Principal
Vaagdevi College of Pharmacy
 Hanamkonda, Warangal-506 001



Report

Comment by Principal

Practical session hours are increased for the better understanding of the course.



Principal
Vaagdevi College of Pharmacy
 Hanamkonda, Warangal-506 001



VISWAMBHARA EDUCATIONAL SOCIETY
VAAGDEVI COLLEGE OF PHARMACY

(Approved by AICTE & PCI, New Delhi & affiliated to Kakatiya University, Warangal, T.S)
Ramnagar Dist. Hanumakonda-506001, (T.S)

FACULTY FEEDBACK ON CURRICULUM

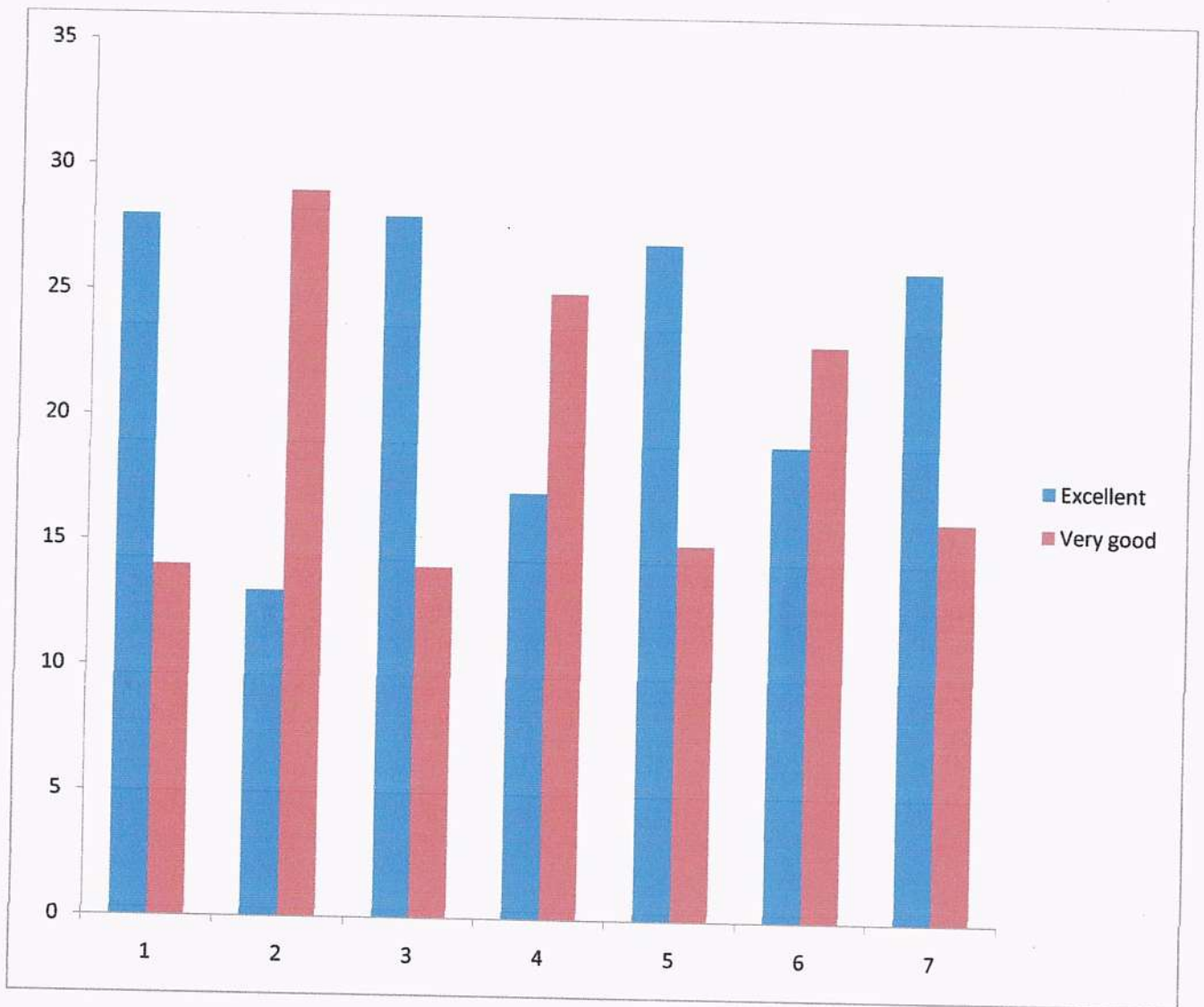
ACADEMIC YEAR 2018-2019

Total Number of Participants: 42

S.No.	Parameters	Evaluation Parameters				
		Excellent	Very good	Good	Average	Poor
1.	How do you rate the coverage of the curriculum in catering to your professional needs?	28	14	-	-	-
2.	How do you rate the relevance of the courses in the curriculum in helping students to attain the program outcomes?	13	29	-	-	-
3.	How do you rate the relevance of the curriculum in relation to latest technology or emerging trends in the industry?	28	14	-	-	-
4.	How do you rate the usefulness of training given to you for effective teaching?	17	25	-	-	-
5.	How do you rate the relevance of courses in curriculum in making student employable?	27	15	-	-	-
6.	How do you rate the facilities for delivering the course content effectively?	19	23	-	-	-
7.	How do you rate the relevance of the add on / value added courses offered to the students in the curriculum?	26	16	-	-	-



Principal
Vaagdevi College of Pharmacy
Hanamkonda, Warangal-506 001



Report

Comment by Principal

It is instructed to all faculties to enroll in online courses available in SWAYAM portal related to their area of expertise which adds up additional knowledge.



Principal
Vaagdevi College of Pharmacy
 Hanamkonda, Warangal-506 001



VISWAMBHARA EDUCATIONAL SOCIETY
VAAGDEVI COLLEGE OF PHARMACY

(Approved by AICTE & PCI, New Delhi & affiliated to Kakatiya University, Warangal, T.S)
Ramnagar Dist. Hanumakonda- 506001, (T.S)

ALUMNI FEEDBACK ON CURRICULUM

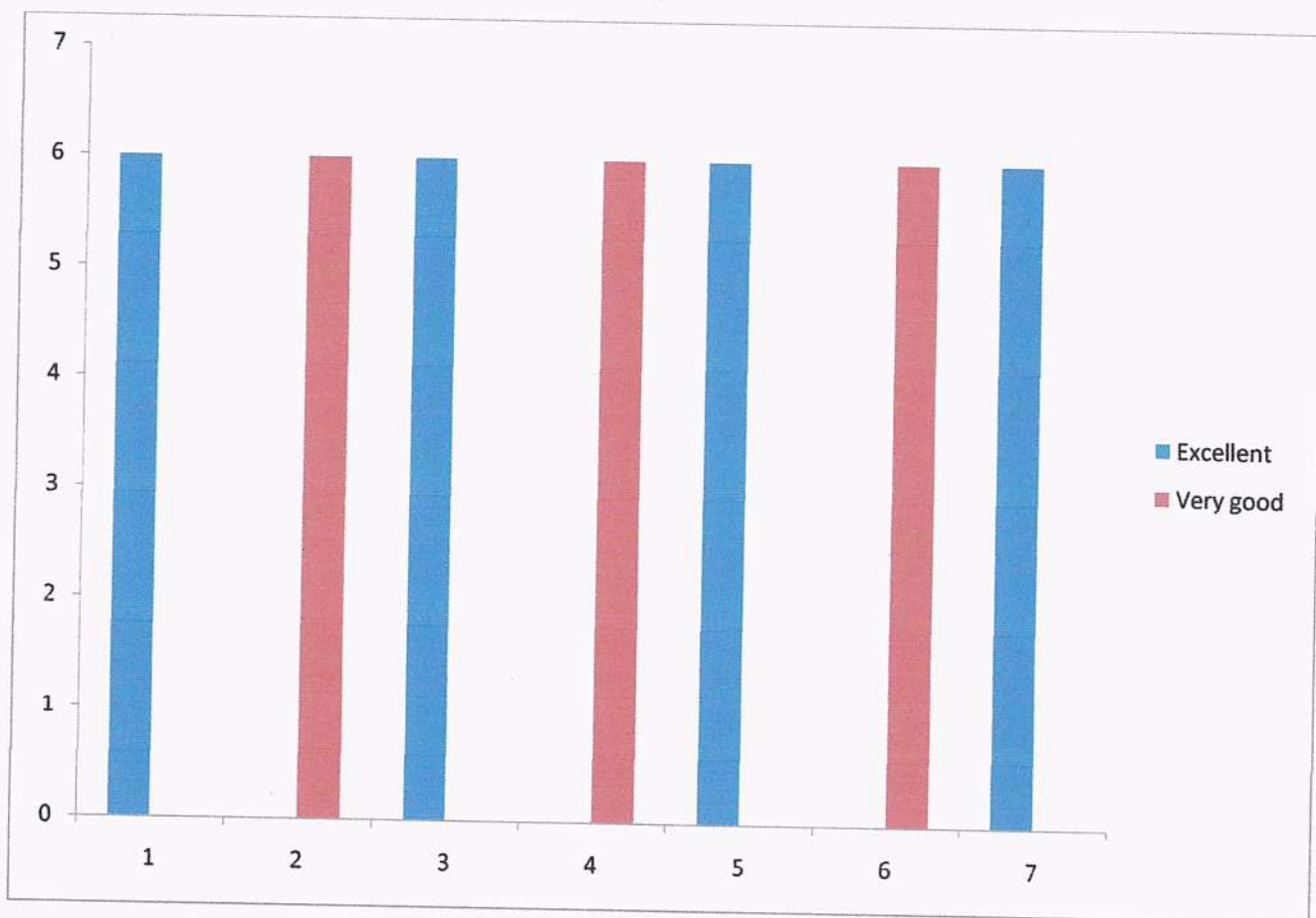
ACADEMIC YEAR 2018-2019

Total Number of Participants: 6

S.No.	Parameters	Evaluation Parameters				
		Excellent	Very good	Good	Average	Poor
1.	How do you rate the relevance of courses in curriculum in attaining the required skills competencies to your job?	6	0	-	-	-
2.	How do you rate the relevance of the courses in the curriculum and its contents?	0	6	-	-	-
3.	How do you rate the relevance of the curriculum in relation to latest technology or emerging trends in the industry?	6	0	-	-	-
4.	How do you rate the coverage of the curriculum in catering to your professional needs?	0	6	-	-	-
5.	How do you rate the objectives stated and relevance to the course content?	6	0	-	-	-
6.	How do you rate the add on value added courses offered to you in the curriculum in developing disposition in your career?	0	6	-	-	-
7.	How do you rate the relevance of curriculum in career orientation?	6	0	-	-	-

Principal
Vaagdevi College of Pharmacy
Hanamkonda, Warangal-506 001





Report

Comment by Principal

Communication skills training, career action coaching management training leadership training were given to the students.



~~Principal~~
Vaagdevi College of Pharmacy
 Hanamkonda, Warangal-506 001



VISWAMBHARA EDUCATIONAL SOCIETY

VAAGDEVI COLLEGE OF PHARMACY

(Approved by AICTE & PCI, New Delhi & affiliated to Kakatiya University, Warangal, T.S)
Ramnagar Dist. Hanamakonda- 506001, (T.S)

EMPLOYER FEEDBACK ON CURRICULUM

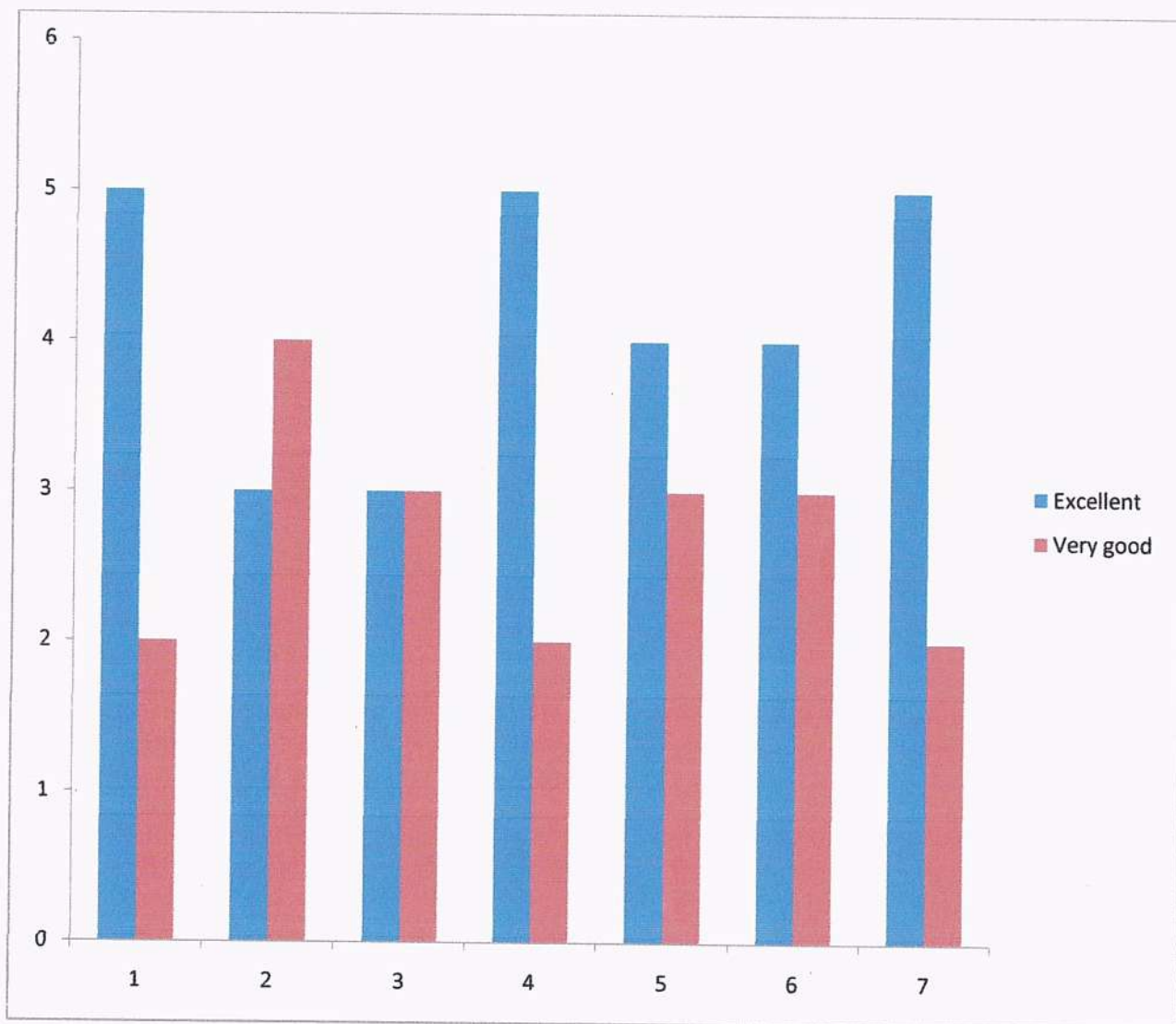
ACADEMIC TEAR 2018-2019

Total Number of Participants: 7

S.No.	Parameters	Evaluation Parameters				
		Excellent	Very good	Good	Average	Poor
1.	How would you rate the current curriculum in relevant in developing the industry expected outcomes from the candidate?	5	2	-	-	-
2.	How do you rate the curriculum is relevant in developing a dedicated attitude in the candidate?	3	4	-	-	-
3.	How do you rate the current curriculum is relevant in addressing the needs/problems of the client groups?	3	3	1	-	-
4.	How would you rate the proficiency of our students working with you?	5	2	-	-	-
5.	Skill sets	4	3	-	-	-
6.	Competencies	4	3	-	-	-
7.	Disposition	5	2	-	-	-



Principal
Vaagdevi College of Pharmacy
Hanamakonda, Warangal-506 001



Report

Comment by Principal

Co-ordination is well maintained between theory and lab activities.



Principal
Vaagdevi College of Pharmacy
Hanamkonda, Warangal-506 001



VISWAMBHARA EDUCATIONAL SOCIETY
VAAGDEVI COLLEGE OF PHARMACY

(Approved by AICTE & PCI, New Delhi & affiliated to Kakatiya University, Warangal, T.S)
Ramnagar Dist. Hanumakonda- 506001, (T.S)

STUDENTS FEEDBACK ON CURRICULUM

ACADEMIC YEAR 2017-2018

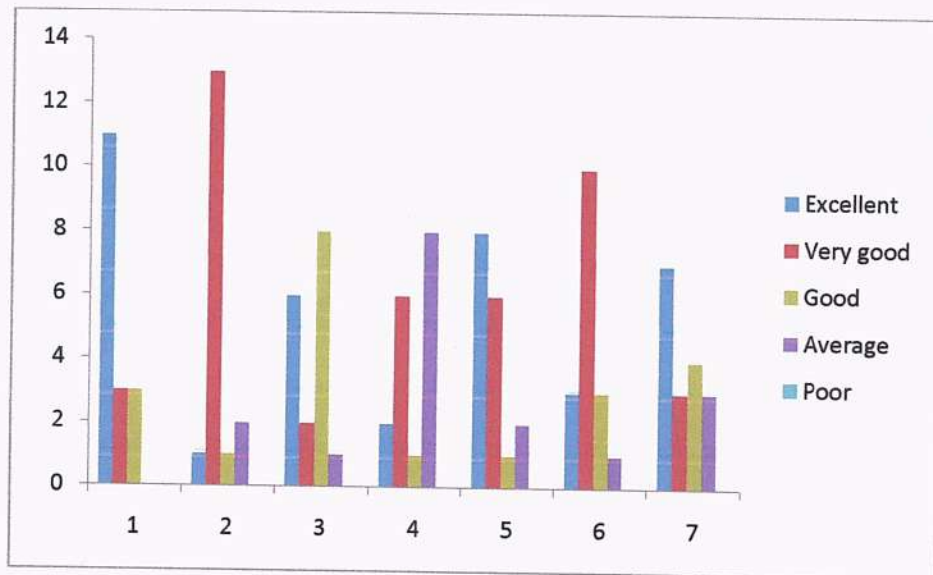
COURSE: B.Pharmacy

Total Number of Participants: 17

S.No.	Parameters	Evaluation Parameters				
		Excellent	Very good	Good	Average	Poor
1.	How do you rate the coverage of syllabus in time?	11	3	3	0	0
2.	How do you rate the objectives stated and relevance to the course content?	1	13	1	2	0
3.	How do you rate the laboratory experiments correlate with the theory?	6	2	8	1	0
4.	How do you rate the coverage of the curriculum in catering to your professional needs?	2	6	1	8	0
5.	How do you rate the relevance of the courses in the curriculum and its contents?	8	6	1	2	0
6.	How do you rate the add on/ value added courses offered to you in the curriculum?	3	10	3	1	0
7.	How do you rate the evaluation scheme designed for each of the course?	7	3	4	3	0



Principal
Vaagdevi College of Pharmacy
Hanamkonda, Warangal-506 001



(Handwritten signature)

Principal
Vaagdevi College of Pharmacy
 Hanamkonda, Warangal-506 001



VISWAMBHARA EDUCATIONAL SOCIETY
VAAGDEVI COLLEGE OF PHARMACY

(Approved by AICTE & PCI, New Delhi & affiliated to Kakatiya University, Warangal, T.S)
Ramnagar Dist. Hanumakonda- 506001, (T.S)

STUDENTS FEEDBACK ON CURRICULUM

ACADEMIC YEAR 2017-2018

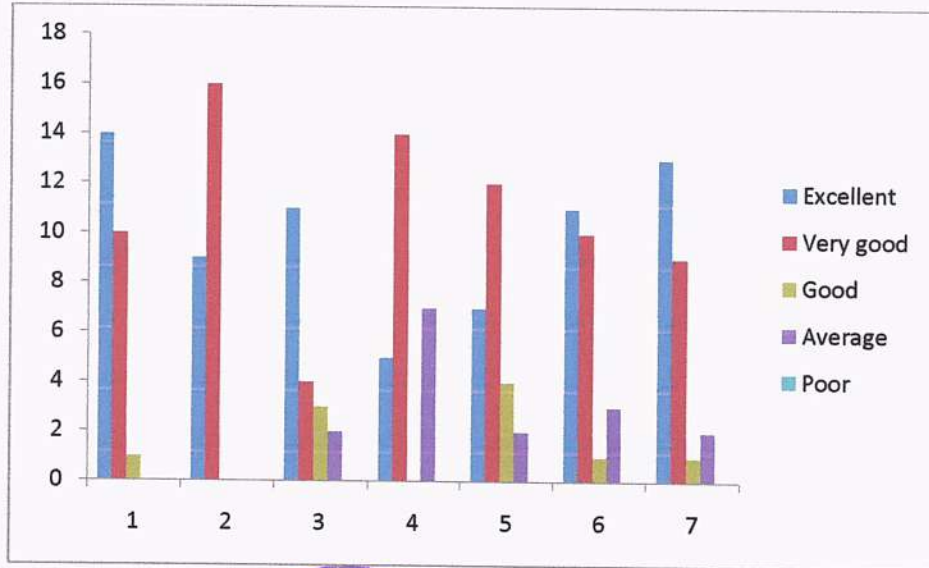
COURSE: Pharm.D

Total Number of Participants: 25

S.No.	Parameters	Evaluation Parameters				
		Excellent	Very good	Good	Average	Poor
1.	How do you rate the coverage of syllabus in time?	14	10	1	0	0
2.	How do you rate the objectives stated and relevance to the course content?	9	16	0	0	0
3.	How do you rate the laboratory experiments correlate with the theory?	11	4	3	2	0
4.	How do you rate the coverage of the curriculum in catering to your professional needs?	5	14	0	7	0
5.	How do you rate the relevance of the courses in the curriculum and its contents?	7	12	4	2	0
6.	How do you rate the add on/ value added courses offered to you in the curriculum?	11	10	1	3	0
7.	How do you rate the evaluation scheme designed for each of the course?	13	9	1	2	0



Principal
Vaagdevi College of Pharmacy
Hanamkonda, Warangal-506 001



Principal
Vaagdevi College of Pharmacy
 Hanamkonda, Warangal-506 001



VISWAMBHARA EDUCATIONAL SOCIETY
VAAGDEVI COLLEGE OF PHARMACY

(Approved by AICTE & PCI, New Delhi & affiliated to Kakatiya University, Warangal, T.S)
Ramnagar Dist. Hanumakonda- 506001, (T.S)

STUDENTS FEEDBACK ON CURRICULUM

ACADEMIC YEAR 2017-2018

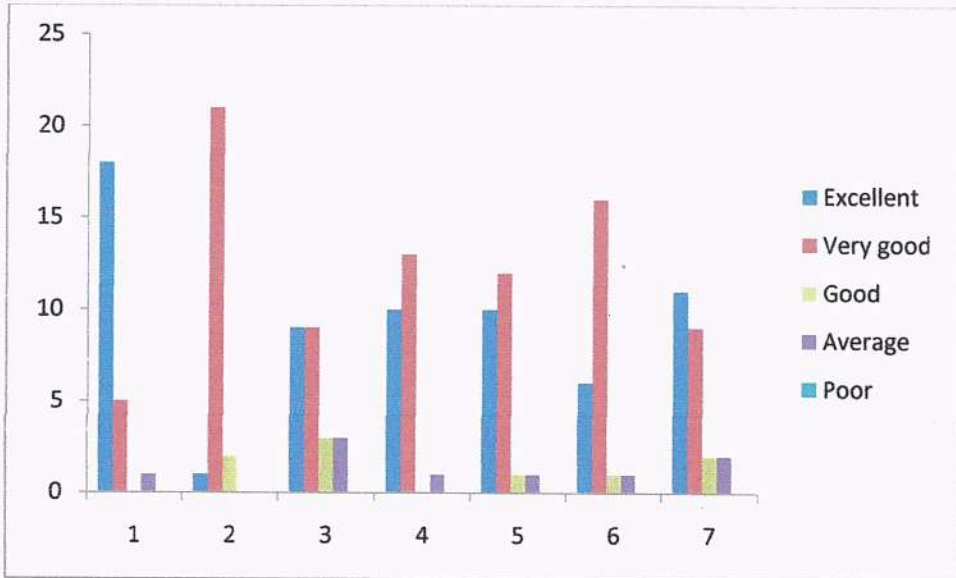
COURSE: M.Pharmacy

Total Number of Participants: 24

S.No.	Parameters	Evaluation Parameters				
		Excellent	Very good	Good	Average	Poor
1.	How do you rate the coverage of syllabus in time?	18	5	0	1	0
2.	How do you rate the objectives stated and relevance to the course content?	1	21	2	0	0
3.	How do you rate the laboratory experiments correlate with the theory?	9	9	3	3	0
4.	How do you rate the coverage of the curriculum in catering to your professional needs?	10	13	0	1	0
5.	How do you rate the relevance of the courses in the curriculum and its contents?	10	12	1	1	0
6.	How do you rate the add on/ value added courses offered to you in the curriculum?	6	16	1	1	0
7.	How do you rate the evaluation scheme designed for each of the course?	11	9	2	2	0



Principal
Vaagdevi College of Pharmacy
Hanamkonda, Warangal-506 001



Report

Comment by Principal

ICT enabled classrooms were increased to continuation of classes for the better delivery of the course curriculum.



(Handwritten signature)

Principal
Vaagdevi College of Pharmacy
 Hanamkonda, Warangal-506 001



VISWAMBHARA EDUCATIONAL SOCIETY
VAAGDEVI COLLEGE OF PHARMACY

(Approved by AICTE & PCI, New Delhi & affiliated to Kakatiya University, Warangal, T.S)
 Ramnagar Dist. Hanumakonda- 506001, (T.S)

FACULTY FEEDBACK ON CURRICULUM

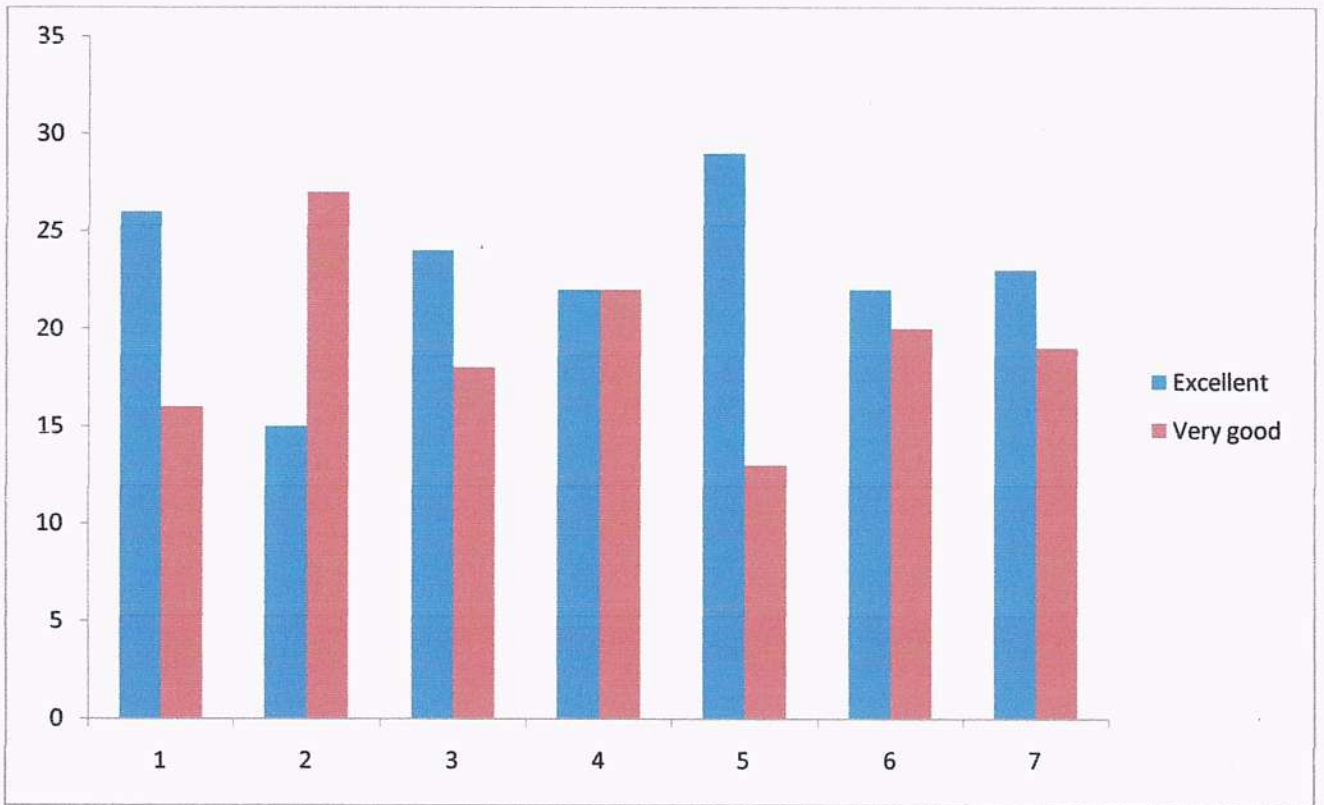
ACADEMIC YEAR 2017-2018

Total Number of Participants: 42

S.No.	Parameters	Evaluation Parameters				
		Excellent	Very good	Good	Average	Poor
1.	How do you rate the coverage of the curriculum in catering to your professional needs?	26	16	-	-	-
2.	How do you rate the relevance of the courses in the curriculum in helping students to attain the program outcomes?	15	27	-	-	-
3.	How do you rate the relevance of the curriculum in relation to latest technology or emerging trends in the industry?	24	18	-	-	-
4.	How do you rate the usefulness of training given to you for effective teaching?	22	22	-	-	-
5.	How do you rate the relevance of courses in curriculum in making student employable?	29	13	-	-	-
6.	How do you rate the facilities for delivering the course content effectively?	22	20	-	-	-
7.	How do you rate the relevance of the add on / value added courses offered to the students in the curriculum?	23	19	-	-	-



Principal
 Vaagdevi College of Pharmacy
 Hanamkonda, Warangal-506 001
Principal



Report

Comment by Principal

Faculty development programs to be conducted E-content development.



Principal
Vaagdevi College of Pharmacy
 Hanamkonda, Warangal-506 001



VISWAMBHARA EDUCATIONAL SOCIETY
VAAGDEVI COLLEGE OF PHARMACY

(Approved by AICTE & PCI, New Delhi & affiliated to Kakatiya University, Warangal, T.S)
Ramnagar Dist. Hanamakonda- 506001, (T.S)

ALUMNI FEEDBACK ON CURRICULUM

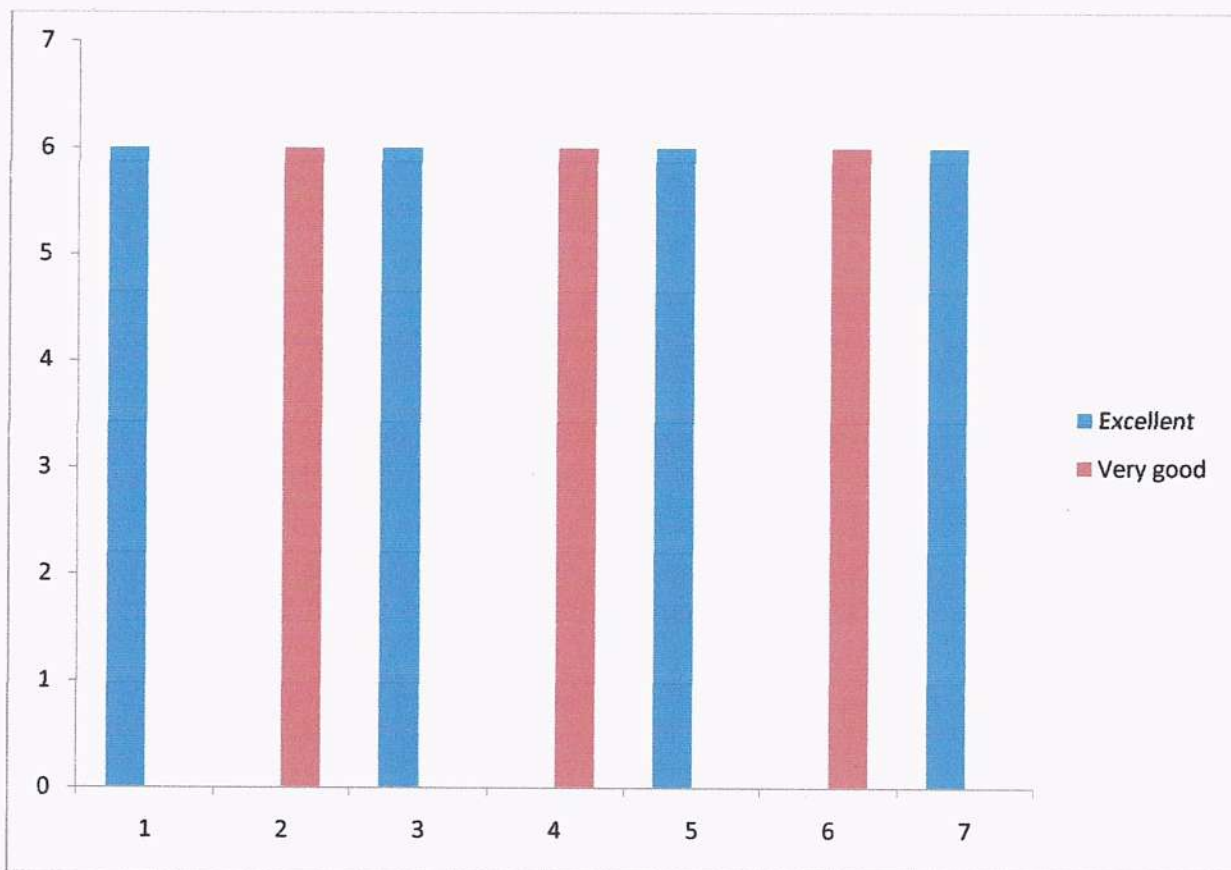
ACADEMIC YEAR 2017-2018

Total Number of Participants: 6

S.No.	Parameters	Evaluation Parameters				
		Excellent	Very good	Good	Average	Poor
1.	How do you rate the relevance of courses in curriculum in attaining the required skills competencies to your job?	6	0	-	-	-
2.	How do you rate the relevance of the courses in the curriculum and its contents?	0	6	-	-	-
3.	How do you rate the relevance of the curriculum in relation to latest technology or emerging trends in the industry?	6	0	-	-	-
4.	How do you rate the coverage of the curriculum in catering to your professional needs?	0	6	-	-	-
5.	How do you rate the objectives stated and relevance to the course content?	6	0	-	-	-
6.	How do you rate the add on/ value added courses offered to you in the curriculum in developing disposition in your career?	0	6	-	-	-
7.	How do you rate the relevance of curriculum in career orientation?	6	0	-	-	-



Principal
Vaagdevi College of Pharmacy
Hanamakonda, Warangal-506 001
Principal





Report

Comment by Principal

The institution decided to conduct various certificate courses in each department.




Principal
Vaagdevi College of Pharmacy
Hanamkonda, Warangal-506 001

	VISWAMBHARA EDUCATIONAL SOCIETY VAAGDEVI COLLEGE OF PHARMACY
	(Approved by AICTE & PCI, New Delhi & affiliated to Kakatiya University , Warangal, T.S) Ramnagar Dist. Hanumakonda- 506001, (T.S)

EMPLOYER FEEDBACK ON CURRICULUM

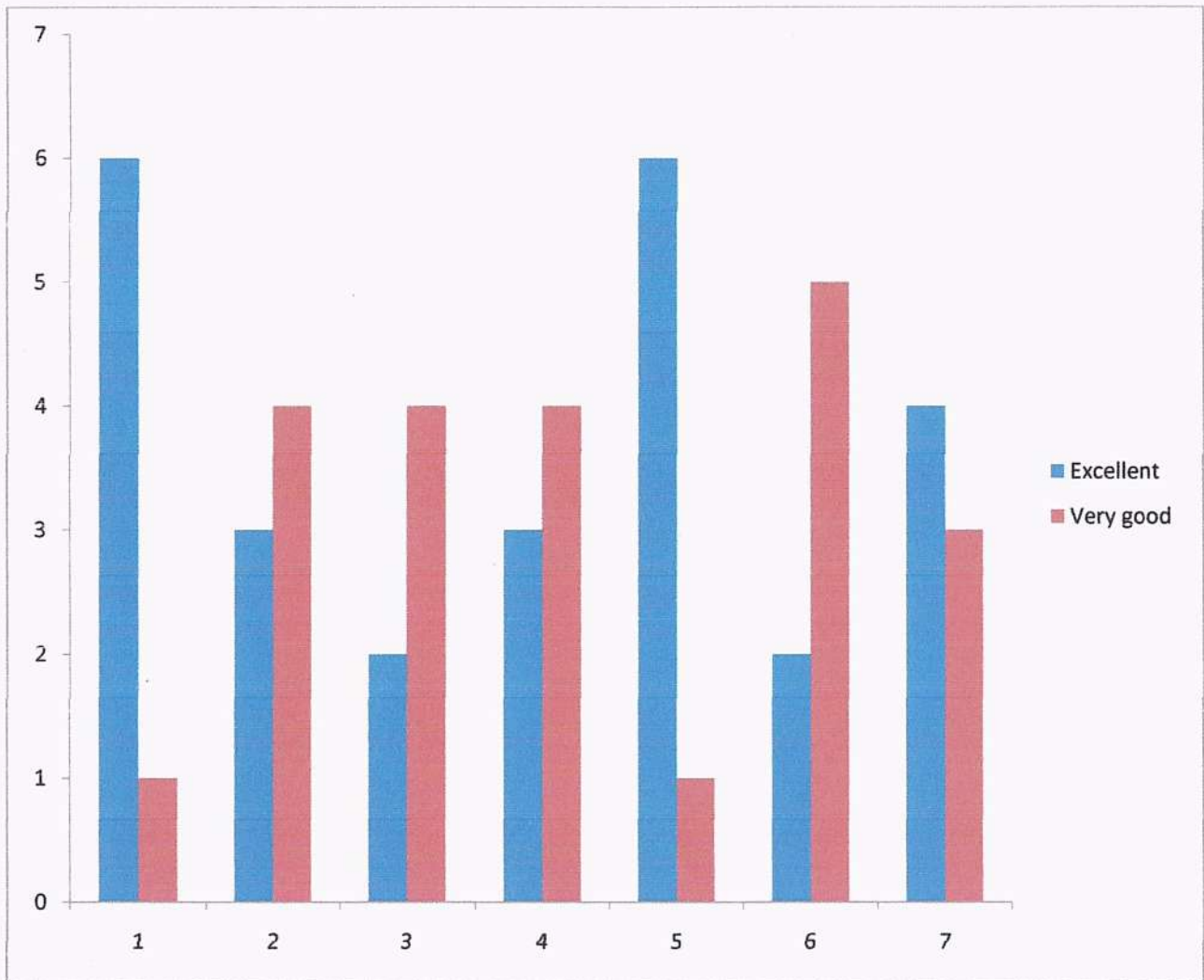
ACADEMIC YEAR 2017-2018

Total Number of Participants: 7

S.No.	Parameters	Evaluation Parameters				
		Excellent	Very good	Good	Average	Poor
1.	How would you rate the current curriculum in relevant in developing the industry expected outcomes from the candidate?	6	1	-	-	-
2.	How do you rate the curriculum is relevant in developing a dedicated attitude in the candidate?	3	4	-	-	-
3.	How do you rate the current curriculum is relevant in addressing the needs/problems of the client groups?	2	4	1	-	-
4.	How would you rate the proficiency of our students working with you?	3	4	-	-	-
5.	Skill sets	6	1	-	-	-
6.	Competencies	2	5	-	-	-
7.	Disposition	4	3	-	-	-




 Principal
 Vaagdevi College of Pharmacy
 Hanamkonda, Warangal-506 001



Report

Comment by Principal

Ethics is introduced to improve behavioral skills.



Principal
Vaagdevi College of Pharmacy
 Hanamkonda, Warangal-506 001